

The graphic for "Sistrade Software Packaging" features a large, solid dark red rectangle. Inside this rectangle, the words "Sistrade Software" are written in a white, sans-serif font, and the word "Packaging" is written below it in a larger, bold, white, sans-serif font. The background of the entire page is a light blue-grey with faint white circuit lines and icons (like a thumbs up, a laptop, and a share icon) and a network of red lines with dots at the bottom.

Sistrade Software **Packaging**

Get to know SISTRADE

SISTRADE – Software Consulting, S.A. is an information systems company with know-how in software development and consulting services for different areas, including industrial companies. SISTRADE main goal is to offer the market the best information systems tools, in order to help its customers to improve their performance in all the critical business processes.

Sistrade software is a configurable solution and the modules can be adapted to specific needs of each company, avoiding the implementation of a package which is too generic and will not be used at 100% of its capacity.

We focus all our activity on quality and improvement, cultivating research and innovation in every action and we are committed to the best information security practices. Our Management System demonstrates our involvement and commitment, in addition to being certified by the normative references NP EN ISO 9001:2015, NP4457:2007 and ISO 27001.



Thousands
of Users



+ 15
Languages



Industry 5.0



Paperless



Total
Integration



Process
Automation



Complete
Traceability



Continuous
Improvement



Productivity
Improvement



Cost Reduction



Waste Reduction

Sistrade Software for the Packaging Industry



Sistrade software provides comprehensive solutions for the folding cartons, rigid boxes, corrugated packaging, and display industries. Highly configurable and adaptable, Sistrade software can be tailored to the unique needs of any company, offering extensive control over the entire production process.

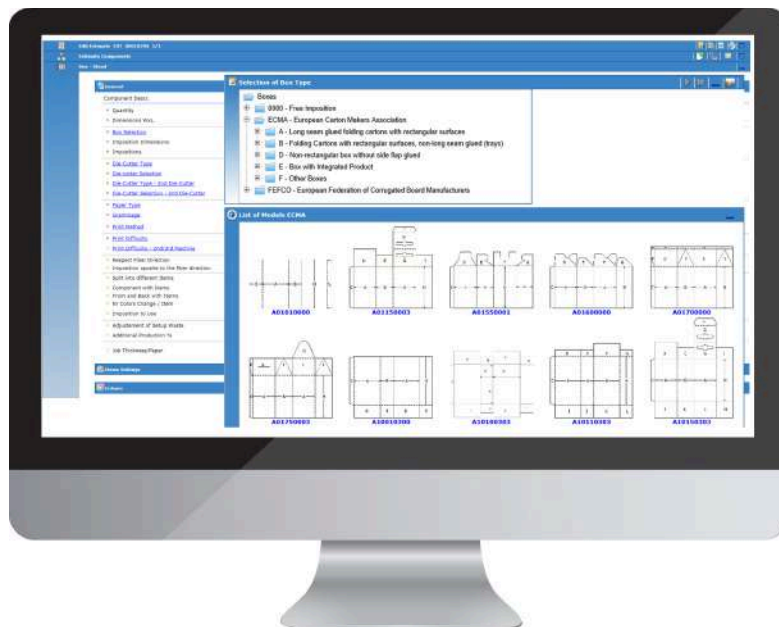
Main Features

- Estimate jobs such as folding cartons, rigid boxes, corrugated packaging and displays
- Built-in design library with ECMA and FEFCO standards, as well as customer-developed designs
- Interface with structural packaging design software
- Use of standardized DXF files to define impositions
- Calculate ink and varnish consumption
- Manage a tool library for dies, including cutting, stripping, and embossing
- Optimization of material usage and production processes, leading to significant cost savings
- Material traceability, from reception to the final product and vice versa
- Definition and calculation of packing and palletizing requirements
- Streamlining of pre-press and customer approval workflows
- Scheduling multi-section and multi-plant jobs, including alternative scenarios
- Monitoring production in real-time through shop-floor data collection with automation data
- Industrial costing calculation for pre and post-production cost analysis
- Measuring Overall Equipment Effectiveness (OEE)
- Management of finished goods by batch/pallet
- Handling of labelling, including GS1 identification, box labels, and pallet labels
- Streamlining the dispatch and invoicing of finished goods

Sistrade Software for the Packaging Industry

Estimate Management

Sistrade estimation module is designed to assist users in accurately estimating the requirements and costs associated with producing any packaging product. This module provides a range of tools and functionalities to optimize the imposition, material usage, and overall production process of folding cartons, rigid boxes, corrugated boxes or displays to calculate all relevant costs.

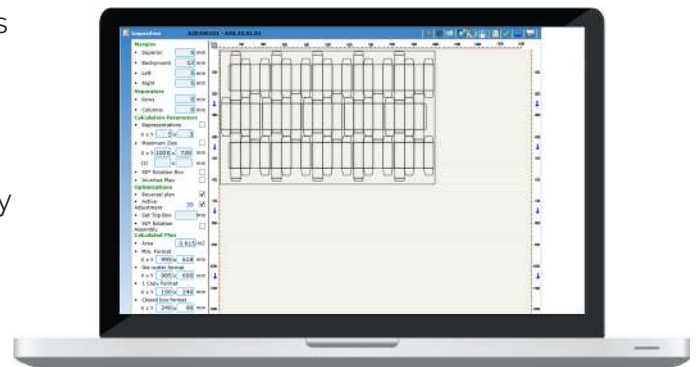


Main Features

- ECMA and FEFCO designs available in the system to facilitate the imposition definition, optimizing the layout to minimize waste and maximize material efficiency
- Integration with CAD software, for seamless imposition import
- Calculation of production costs, including materials, labor, tooling, and overheads
- Calculation of the optimal size and shape of the packaging, including the pallet, based on product dimensions
- Detailed cost breakdown for different quantities

Imposition calculation and optimization

- Complete design library with ECMA and FEFCO standards, along with customer-developed designs
- Optimization of imposition layouts for the design library quickly and easily, including nesting and gang printing
- Maximizing material usage and minimizing waste by strategically placing ups to reduce gaps, including the correct definition of grain direction
- Wizard to apply all possible optimizations, arranging all items efficiently on different sheet sizes, and presenting the ideal production scenario compared to all possible ones



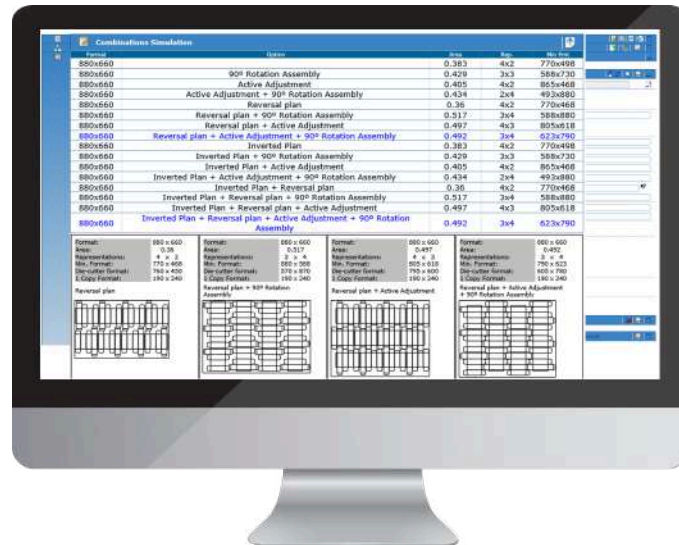
Integration with structural packaging design software suites

- System collects all the necessary information: imposition layout, number of ups, imposition dimensions, die blades dimensions for both cut and crease
- Using industry standard files (.dxf), a visual display of the imposition is presented and the management of all used and unused files with preview option is also available
- It is possible to adapt number of ups to the job's needs (i.e. imposition was made with 9 ups but only 6 ups will be needed) and the system adapts all calculations to that change



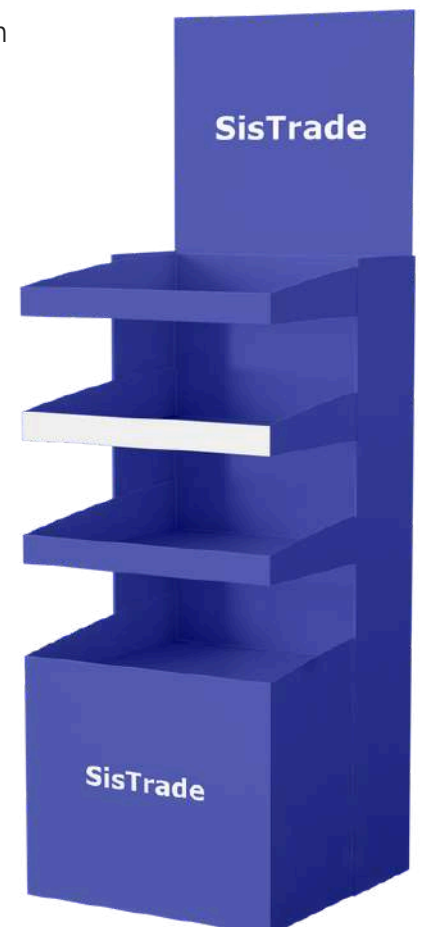
Sistrade Software for the Packaging Industry

Estimate Management



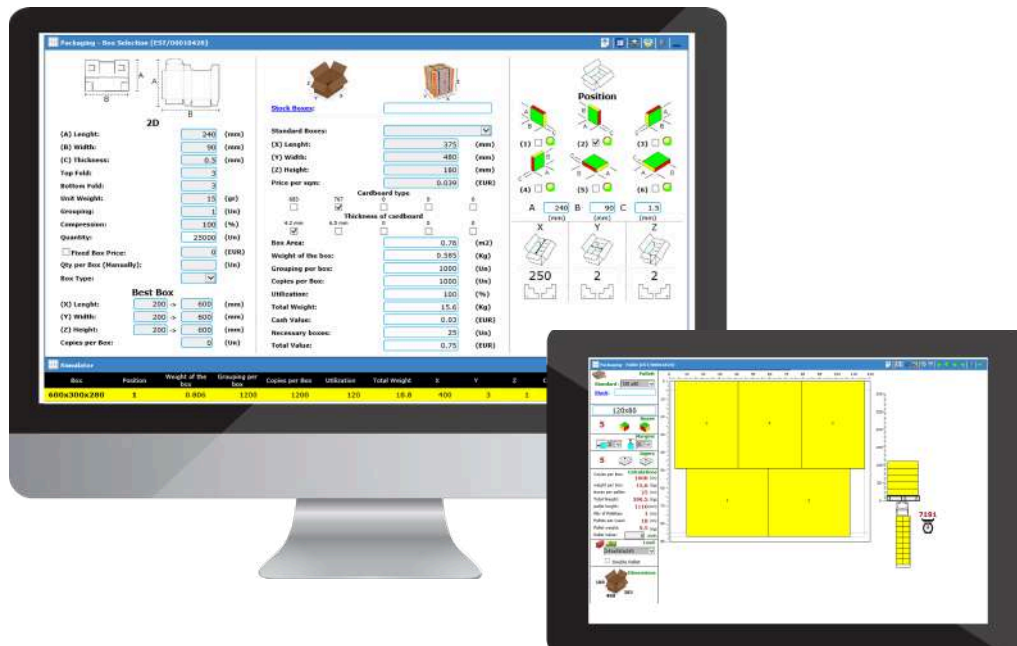
Estimating of complex products

- The system's features enable the definition of all necessary information for manufacturing complex products
- Products can consist of multiple parts or components, which can be printed together on the same sheet or on separate sheets
- Whether using an existing design or a new one, the system accounts for every process
- Each part or component has its own manufacturing process, with unique and detailed specifications
- The system calculates the necessary materials for every manufacturing step, accommodating simple cardboard displays to complex designs involving a mix of materials such as cardboard, corrugated board, and foam board



Packing, palletization and truck/container definition

This feature is designed to enhance the efficiency and effectiveness of packing processes by optimizing the arrangement of items within packages and on pallets.



- Users can input dimensions, weight, and other properties of items to be packed or use the automatically calculated values, according to the product's specifications
- Allows users to simulate different packing configurations to identify the most efficient setup
- Uses algorithms to fit items within containers, reducing unused space and optimizes stacking patterns to maximize the number of items per package
- Define constraints such as weight limits and orientation restrictions
- Optimizes the arrangement of packages on pallets to maximize space and stability
- Specification of the truck/container and calculation of the number of pallets per load
- Users can make manual adjustments to the packing plan if needed
- Estimates the amount of packing material needed, providing a detailed breakdown of packing costs, helping to identify potential savings
- Generates detailed instructions for the packing team, including diagrams and materials to be used

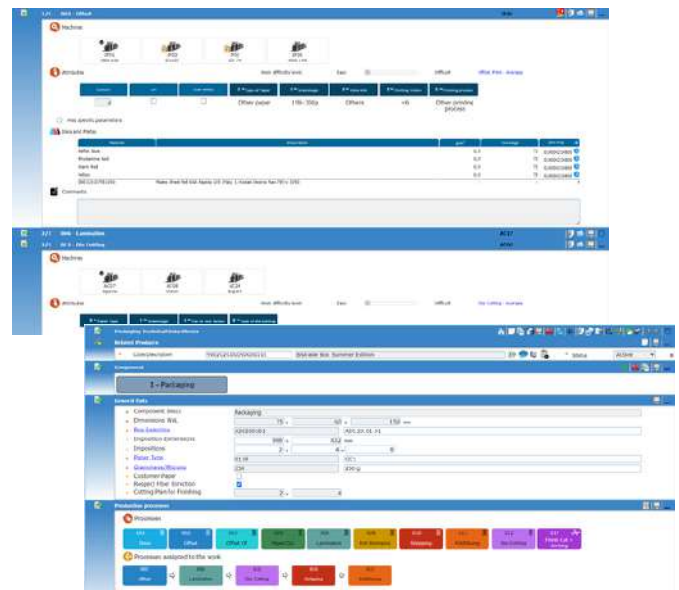
Sistrade Software for the Packaging Industry

Technical Data Sheets

Sistrade Technical Data Sheets are designed to organize, store, and manage technical documentation and specifications for products. Its primary goal is to ensure that all technical information is easily accessible, accurate, and up-to-date, facilitating compliance and efficient information sharing.

Key Benefits

- Consolidate all technical data and specifications in one accessible and organized repository.
- Maintain accurate and up-to-date technical information, ensuring compliance with industry standards and regulations.
- Make technical documentation easily accessible to relevant stakeholders, enhancing decision-making and operational efficiency.



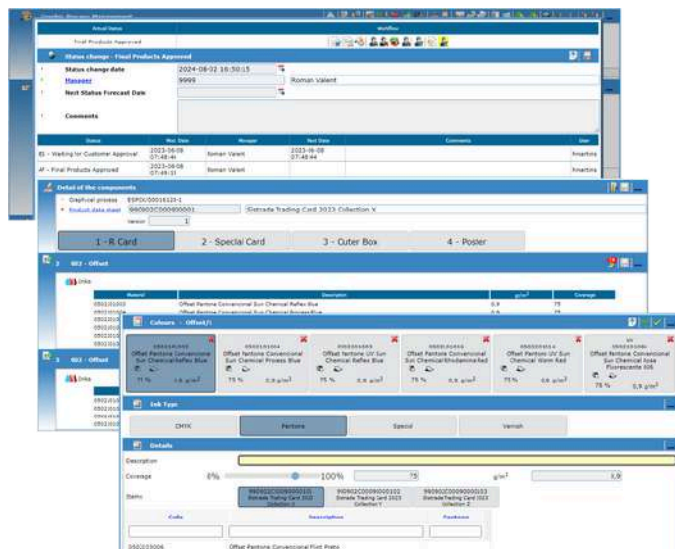
Main Features

- Centralized repository for storing technical data sheets, allowing easy organization and retrieval
- Define all production process flow with the complete specification of raw materials required, directly on the technical data sheet or through Sistrade Graphical Process Management module
- Management of different versions of technical specifications, ensuring users have access to the most current and accurate information
- Detailed definition of the imposition layout, based on the built-in library of ECMA or FEFCO standards or on customized layouts, through integration with packaging design software
- Access control to technical specifications, based on user roles and permissions, ensuring only authorized personnel can view or edit sensitive information
- Robust search capabilities, allowing users to quickly locate specific technical data sheets, as it provides tools for filtering and sorting documents to streamline the retrieval process
- Possibility of integration with external systems, such as structural packaging design software or prepress workflow software, for seamless data exchange and enhanced workflow efficiency
- Support for collaborative editing and review processes, enabling multiple users to work simultaneously on different areas of the technical specification

Graphical Process Management

Sistrade Graphical Process Management is designed to streamline and optimize the entire workflow of printing processes, from specifications intake to final approval. The module aims to enhance efficiency, and effectively manage resources and costs in this preliminary step.

These functionalities support the efficient management of the graphical processes, ensuring that production runs smoothly, meets quality standards, and remains cost-effective, while keeping track on each product status connected with the customer interaction.



Key Benefits

- Simplify and optimize each step of the printing process, ensuring a smooth transition between steps.
- Improve operational efficiency by automating tasks, optimizing resource allocation, and minimizing downtime of the different resources involved.
- Maintain high-quality standards through effective process management.

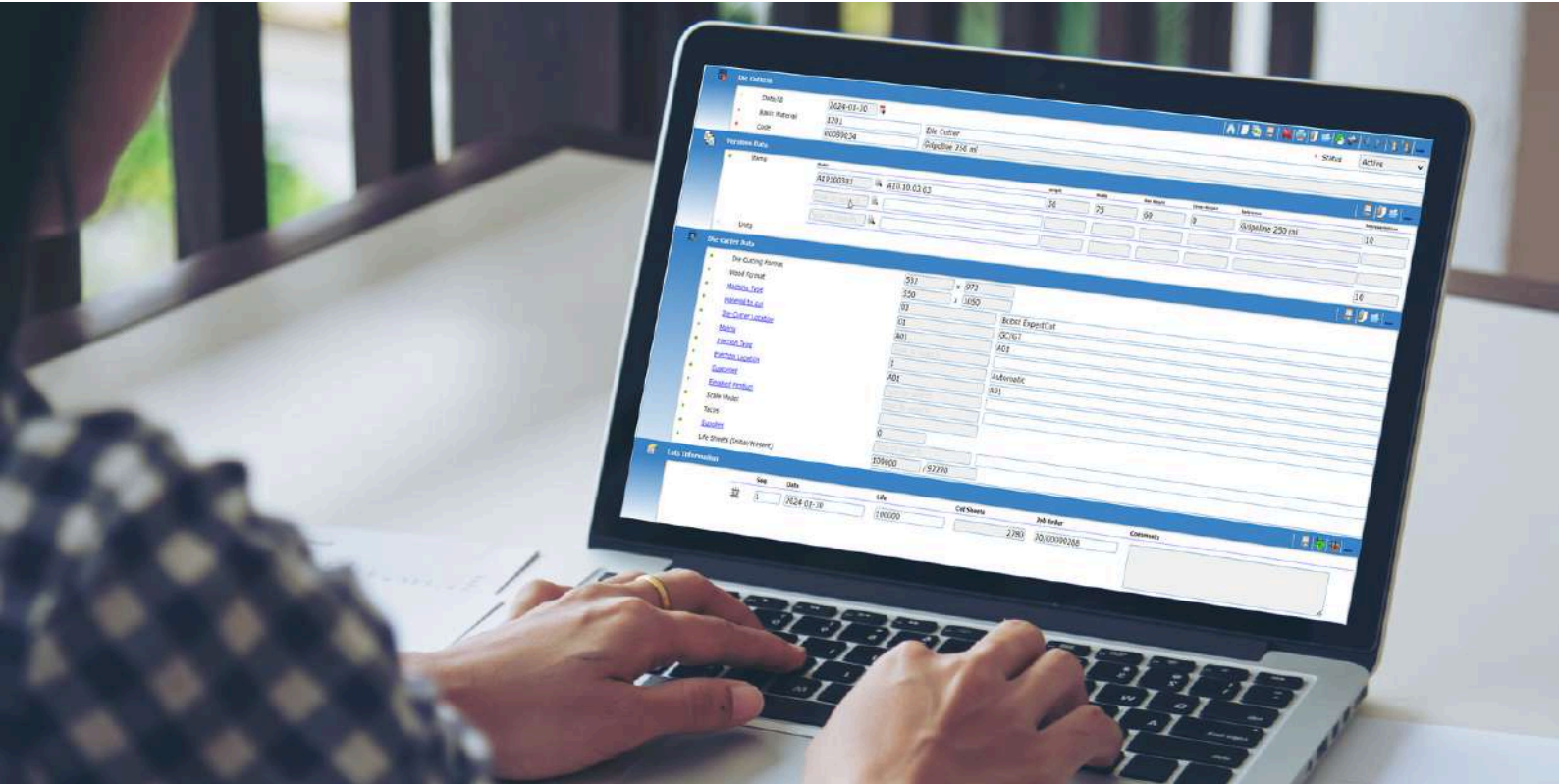
Main Features

- Input and management of customer products, including detailed technical specifications
- Definition of the specific colors/inks and/or varnishes/coatings that will be used on each product
- Real-time tracking of status, from receipt to approval, ensuring transparency and timely updates
- Complete and configurable workflow of the possible steps of the product approval process
- Easier scheduling of several stages up to customer approval
- Overview of scheduled tasks and helps avoid scheduling conflicts and resource overuse
- Management of labor allocation, ensuring resources are available and efficiently used for each job
- Automation of repetitive tasks and workflows to reduce production time and minimize errors, through the integration with external software solutions
- Generation of detailed reports on various aspects of the graphical process, such as approval rate, approval delay, rejection rate, all by responsible resource and/or product type
- KPIs for evaluating and continuously improving the efficiency and quality of the process
- Connection with other systems, such as Prepress Workflow Software and CRM, to ensure seamless data flow and enhance overall business operations

Sistrade Software for the Packaging Industry

Tools and Dies Management

This software feature comprehends several components to enhance productivity and maintain the efficiency and longevity of printing and packaging tools and dies.



Main Features

- Tool and Die Inventory Management tracks the location, status, and usage of tools and dies.
- Alerts for maintenance schedules and inventory levels
- Scheduling the use of tools and dies, based on production requirements, helping to optimize workflow and reduce downtime
- Monitoring and logging maintenance activities, scheduling preventive maintenance and tracking repair history to ensure tools and dies are in good working condition, thus managing the individual lifetime of each one
- Managing and storing documentation related to tools and dies, including manuals, compliance certificates and safety data
- Interaction between production planning and production management to ensure tools and dies are aligned with production schedules and requirements
- Providing reports and analytics on tool and die usage, maintenance costs and performance metrics to aid decision-making and cost management

MRP - Material Requirements Planning

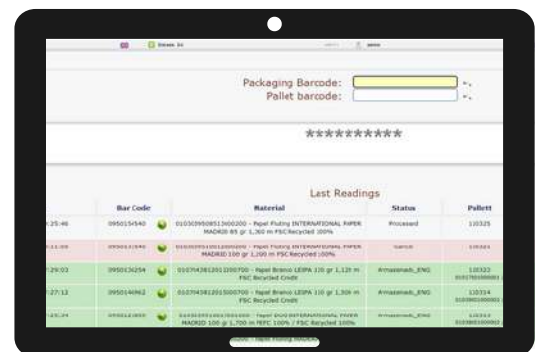
Plan material requirements and purchase orders with an advanced algorithm, ensuring the availability of components and materials.

- Warehouse needs analysis with stock replenishment alerts
- Material requirements planning
- Material selection and reservation
- Calculation of purchasing and production requirements
- Issuance of material requisitions
- Calculation of purchasing and manufacturing dates and deadlines
- Alerts for potential non-conformities in customer delivery deadlines

Material Management and Traceability

Ensure complete traceability of materials from receipt to shipment, facilitating audits and compliance with regulatory standards.

- Recording item movements via barcodes
- Searching and analyzing movements by item
- Material exits for production and their respective returns
- Splitting and merging lots
- Managing item locations in the warehouse



Mobile Warehouse Management

This tool allows real-time updates and mobility of crucial information for effective management of different types of warehouses using mobile devices with built-in barcode readers.

- Material receipt and loading
- Lot information, consumption history and details
- Location search
- Alerts for stock inconsistencies
- Material traceability with barcode technology
- Picking & Packing List
- Registration of finished product exit and issue of delivery note



Sistrade Software for the Packaging Industry

FSC/PEFC Certification

Effectively manage FSC (Forest Stewardship Council) and PEFC (Programme for the Endorsement of Forest Certification) certifications, ensuring the products come from responsibly managed forests and comply with environmental, social, and economic standards.

- Automatic tracking of FSC/PEFC certifications, ensuring compliance with regulatory requirements
- Organization and storage of the necessary documentation related to certifications, audits and suppliers, facilitating access, updating and sharing during inspections
- Tools for internal and external audits preparation, with comprehensive reporting for monitoring compliance status
- Tracking of certified materials throughout the company, ensuring the entire production process complies to FSC/PEFC standards

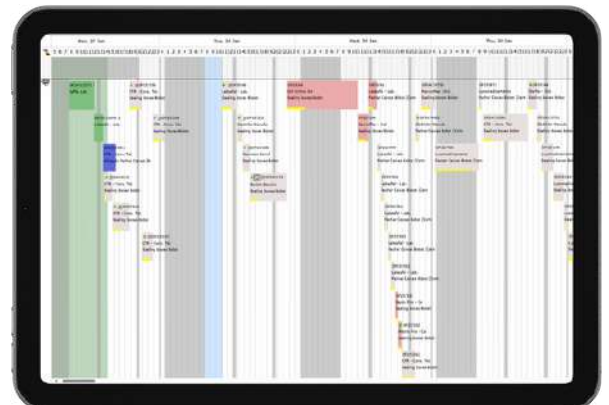


By automating and simplifying the certification management process, companies ensure compliance with the FSC/PEFC, avoiding sanctions and improving their reputation regarding sustainability

Scheduling

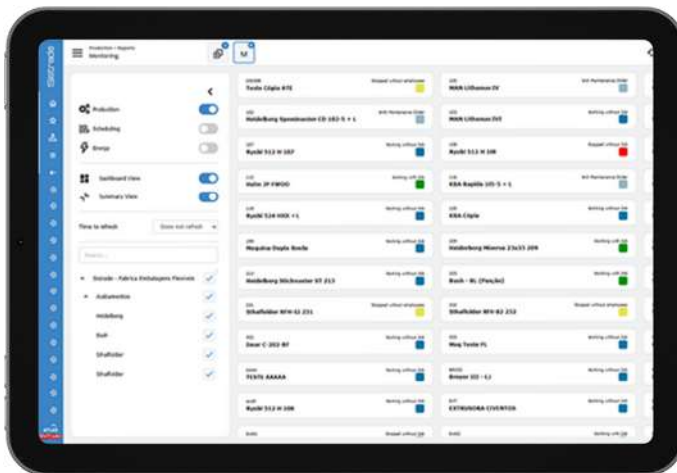
Achieve production efficiency within the established deadlines by optimizing your company's activities and managing resources in an economical and balanced way.

- Dynamic gantt scheduling of job orders
- Planning criterization
- Scheduling activities per employee
- Optimization Tool (AI)
- Scenarios simulation
- Load chart
- Assisted employee scheduling
- Multi-user & multi-plant scheduling
- Integration with Sistrade Data Acquisition System (DAS)



MES - Manufacturing Execution System

- Automatic Data Collection via IoT, industrial touch screen consoles or mobile devices
- Overall Equipment Effectiveness (OEE) in real-time for continuous optimization
- Manual or automatic recording of production quantities and material consumption
- Raw material consumption recording, from manual to fully automatic
- Accurate calculation of industrial costs, including direct and indirect costs
- Product quality assurance, including traceability of non-conformities and equipment calibration
- Comprehensive control of preventive and corrective maintenance and incident analysis
- Interactive production reports to methodically analyse productivity and support decision-making



Shipping Management

Optimize the shipping process with automatic and manual planning, ensuring efficient resource allocation, route optimization, cost reduction, and other personalized adjustments to meet customer-specific requirements while guaranteeing timely delivery.



- Automatic generation of loading groups
- Automatic vehicle selection according to planned deliveries
- Issuance and editing of delivery notes
- Change the shipping preparation documents in the Picking List
- Consolidation of materials to be delivered

Sistrade Software for the Packaging Industry

Business Intelligence

The Sistrade Business Intelligence (BI) module is designed to support managers and analysis teams, offering a clear, real-time view of all company processes, from production to financial management, facilitating quicker and more effective strategic decision-making.

- **Make informed and rapid decisions** with access to real-time data, obtaining a clear and accurate view of your company
- **Customize the visualization** of the most important information through dynamic dashboards tailored to your needs
- **Quickly identify inefficiencies** and increase productivity by optimizing processes and reducing costs
- **Personalize the most relevant KPIs** for your role, ensuring you always have the correct metrics at your disposal
- **Obtain a comprehensive view** of your company's performance, with in-depth and strategic analysis across various dimensions
- **Focus on continuous improvement** by measuring KPIs in real-time and adjusting strategies swiftly

Business Analysis



- Administrative & Financial Area
- Accounting & Treasury
- Fixed Assets
- Human Resources
- Estimating & Commercial Management
- Procurement & Warehouse
- Sales & Expedition
- Production Management
- Quality Control
- Equipment Maintenance

Solutions



SisTrade®

Travessa da Prelada, 511
4250-380 Porto - Portugal
inov@sistrade.com

Spain

Parque Empresarial La Moraleja
Avenida de Europa, 19 3º A
28108 Madrid - Spain
madrid@sistrade.com

Slovenia

Rozna dolina, Cesta II/29
1000 Ljubljana - Slovenia
ljubljana@sistrade.com

France

39 rue du Mûrier (BP 125)
37540 Saint-Cyr-sur-Loire - France
paris@sistrade.com

Serbia

Birčaninova, 40
11000 Belgrade - Serbia
belgrade@sistrade.com

Germany

Krümmlingsweg 10a
D-63110 Rodgau - Germany
frankfurt@sistrade.com

Turkey

Dikilitaş Mahallesi, Hakki Yeten
Cad. 10/N Sel. Plaza Kat:6
34349 Besiktas - Turkey
istanbul@sistrade.com

Poland

Al. Niepodległości, 69 - 7º
02-626 Warsaw - Poland
warsaw@sistrade.com

