

# Sistrade Software

## **Label Printing**

# Get to know SISTRADE

SISTRADE – Software Consulting, S.A. is an information systems company with know-how in software development and consulting services for different areas, including industrial companies. SISTRADE main goal is to offer the market the best information systems tools, in order to help its customers to improve their performance in all the critical business processes.

Sistrade software is a configurable solution and the modules can be adapted to specific needs of each company, avoiding the implementation of a package which is too generic and will not be used at 100% of its capacity.

We focus all our activity on quality and improvement, cultivating research and innovation in every action and we are committed to the best information security practices. Our Management System demonstrates our involvement and commitment, in addition to being certified by the normative references NP EN ISO 9001:2015, NP4457:2007 and ISO 27001.



Thousands  
of Users



+ 15  
Languages



Industry 5.0



Paperless



Total  
Integration



Process  
Automation



Complete  
Traceability



Continuous  
Improvement



Productivity  
Improvement



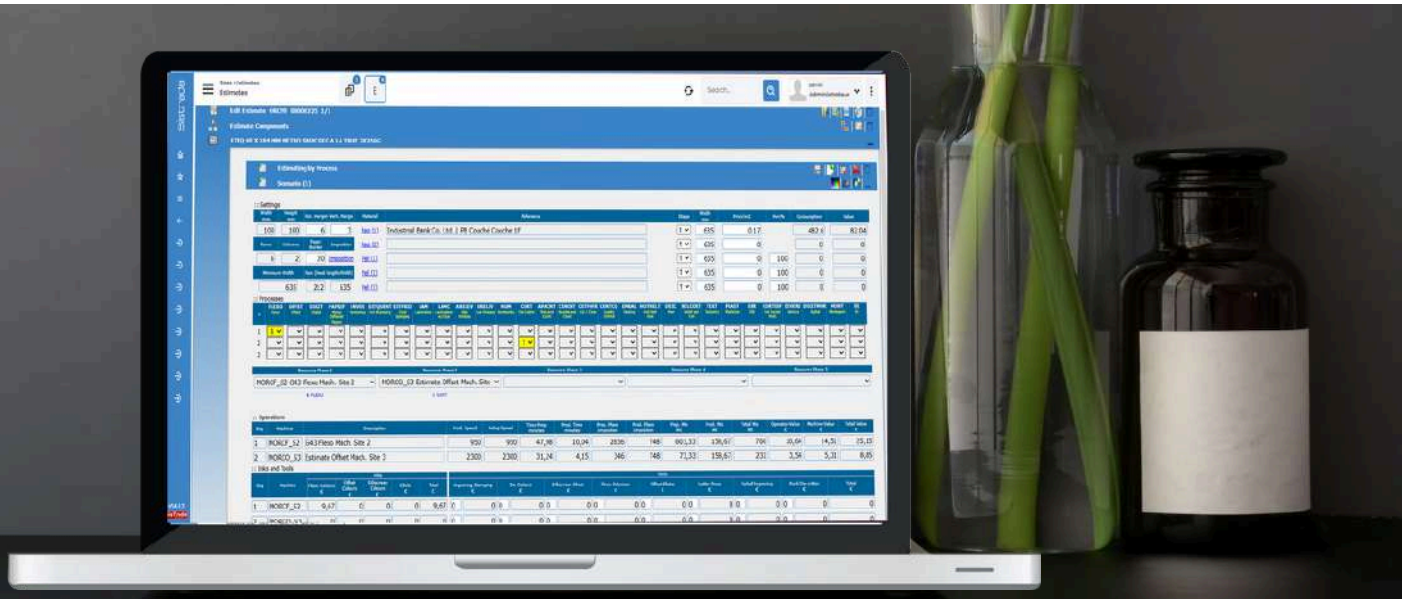
Cost Reduction



Waste Reduction



# Sistrade Software for Label Printing



Sistrade software provides comprehensive solutions for the label printing industry, supporting the production of self-adhesive, wet-glue, shrink sleeve, extended text label and In-mold (IML) labels. Highly configurable and adaptable, Sistrade software can be tailored to the specific needs of any label converter, offering full control over the entire production workflow — from estimating and job management to printing, finishing, and quality control.

## Main Features

- Estimate jobs such as Self-Adhesive Labels, Sleeves, Wet-glue, Shrink Sleeve, Extended Text Label and In-mold (IML) labels
- Integrate with graphical design software for design approvals
- Calculate ink and varnish consumption
- Manage a tool library for dies, including stamping, silkscreen, and embossing
- Manage and control the Labels numbering according to wine commission
- Comparison Simulation of different processes with details of all costs involved per scenario
- Optimization of material usage and production processes, leading to significant cost savings
- Material traceability, from reception to the final product and vice versa
- Definition and calculation Labels/Diameter per Roll, packing and palletizing requirements
- Streamlining of pre-press and customer approval workflows
- Scheduling multi-section and multi-plant jobs, including alternative scenarios
- Monitoring production in real-time through shop-floor data collection with automation data
- Industrial costing calculation for pre and post-production cost analysis
- Measuring Overall Equipment Effectiveness (OEE)
- Management of finished goods by batch/pallet
- Handling of labelling, including GS1 identification, roll labels, box labels, and pallet labels
- Streamlining the dispatch and invoicing of finished goods

# Sistrade Software for Label Printing

## Estimate Management

The Sistrade estimation module is designed to assist users in accurately calculate the requirements and costs involved in producing any type of label. Whether for self-adhesive, wet-glue, shrink sleeve, extended text label or In-mold (IML) labels, the module offers a wide range of tools to optimize layout, material usage, and the entire production process to calculate all relevant costs. It enables precise cost calculation for each job, ensuring efficiency and profitability across the label printing workflow.

## Main Features

- Calculation of costs of process based of Rotary/Cylinders or Conventional/Sheets
- Calculation of production costs, including materials, labor, tooling, and overheads
- Optimization of imposition according to different perimeter of Cylinders
- Definition of Inks and Tools per process stage
- Comparison Simulation of different processes with details of all costs involved per scenario
- Detailed cost breakdown for different quantities



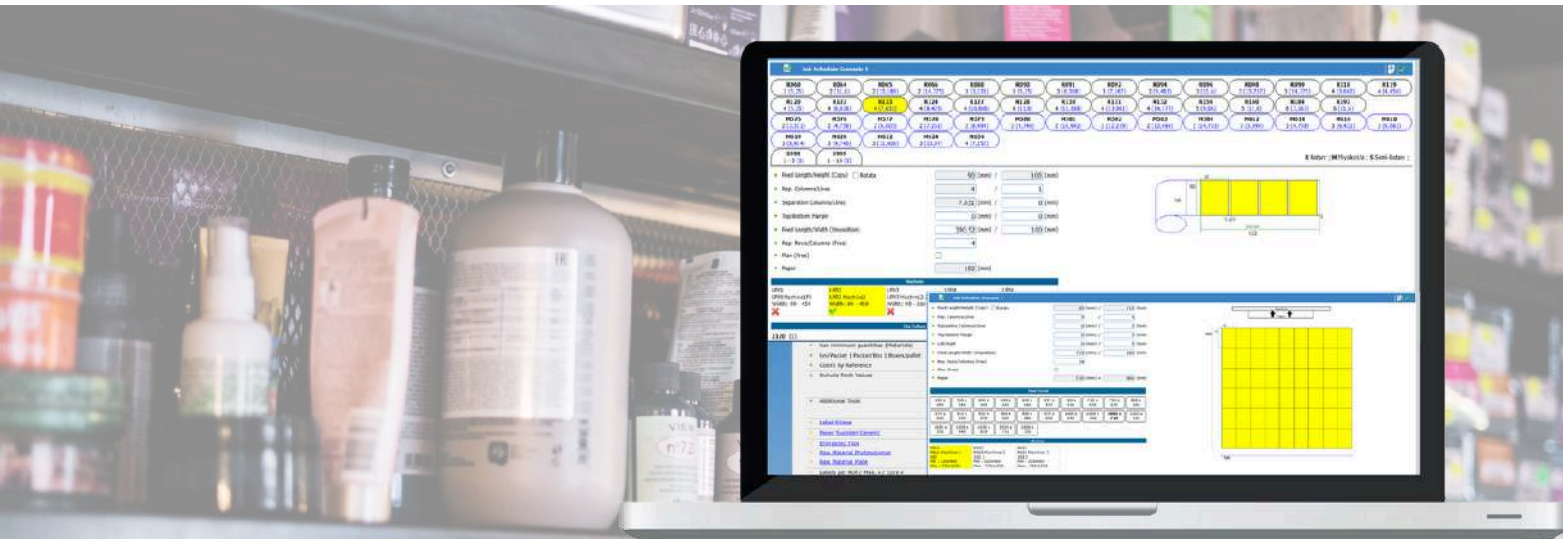
## Estimate Cost Calculation

- Automatic suggestion of viable machines per process.
- Job difficulty definition associated to each process.
- Connection to Technical Data Sheet (TDS) to allow to Estimate based on TDS.
- Possibility to calculate estimate costs for production scenarios/routes and decide for which one to proceed.
- Possibility to create several scenarios to compare different technologies, production sites, group of machines, ...

## Die Cutter Management

- Management of all in-house die cutters
- Creation of new die cutter types by introducing some data about the height and width of the label, label distribution, space between labels, etc. in the die cutter settings
- Die cutter life cycle

# Estimate Management



## Imposition calculation and optimization – Roll

- Optimization of imposition layouts based on Cylinder type, machine settings, materials width and available Die Cutter sizes, and per process stage.
- Feed length optimization in each process step, considering cylinder perimeter, cliché type, and mechanical machine adjustments.
- Maximization of material usage by aligning production width with standard material widths.
- Optimization of imposition according to each type of production unit (Printing, Stamping, silkscreen, ...) of the machine.

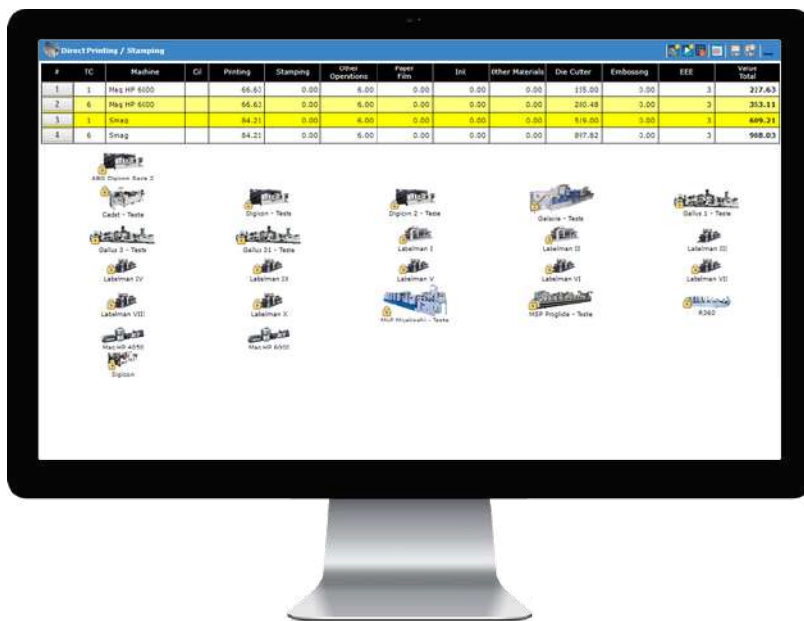
## Imposition calculation and optimization – Sheets

- Optimization of Imposition according several parameters arranging all items efficiently, like machine settings, paper format and process limitations.
- Imposition assistant to make the distribution of multi-references of different sizes.



# Sistrade Software for Label Printing

## Estimate - Calculation



## Estimate Cost Calculation

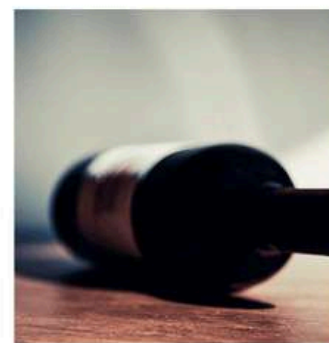
- General costs of preparation and printing, evaluating the measurements on the plan, tracks, ink area, times, etc.
- Costs of varnish, including setup time and printing types
- Costs with resources, machines, preparation times and respective needs
- Prepress and finishing operations, including outsourced phases
- Other tools and materials

## Detailed Costs Summary

- Cost by manufacturing stage (value and %)
- Unit, thousand and total cost

## Margins & Final Values

- Application of margins, with margins index, commissions, administrative costs, fixed costs, rappel, etc.
- Possibility to define default margins by product type and by customer
- Economic analysis





# Estimate - Analysis and Approval

## Additional Quantities Simulation

- Simulation of additional quantities with the possibility to change margins
- Determination of the cost and selling price by quantity
- Possibility to simulate several quantities, for different products references, simultaneously in seconds

## Follow-up

- Estimate sent directly to customer's e-mail
- Add attachments of extra files
- Customer feedback and competition information
- Review estimate, comments and justification

## Approval Workflow

- Estimate details and costs
- Margins edition
- Add competitor's data

## Other Features

- Manage and add attachments to the estimate
- New estimate version
- Easily accessible "Last Estimates" and advanced search

## Key Features

- Optimization of calculation based on existing die cutters
- Cost scenarios
- Additional quantities simulation
- Wine numbering

# Sistrade Software for Label Printing

## Technical Data Sheets Management

Sistrade Technical Data Sheets are designed to organize, store, and manage technical documentation and specifications for products. Its primary goal is to ensure that all technical information is easily accessible, accurate, and up-to-date, facilitating compliance and efficient information sharing.

### Key Benefits

- Consolidate all technical data and specifications in one accessible and organized repository.
- Maintain accurate and up-to-date technical information, ensuring compliance with industry standards and regulations.
- Make technical documentation easily accessible to relevant stakeholders, enhancing decision-making and operational efficiency.
- Track all Technical and Approval changes through time.



### Main Features

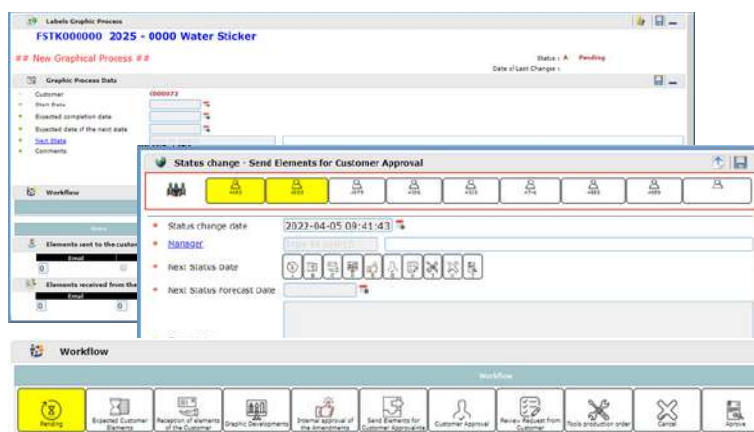
- **Centralized Repository for Technical Data Sheets:** easily store and manage all your label technical data sheets in one secure location. Fast retrieval and streamlined organization help reduce errors and save valuable time.
- **Full Production Process Definition:** define the entire label production process—printing, finishing, die-cutting, rewinding—with all raw materials specified directly within each data sheet or via our intuitive Graphical Process Management module.
- **Version Control for Specifications:** maintain and manage multiple versions of label technical specifications, ensuring teams always work with the most accurate and up-to-date information.
- **Custom Imposition Layout Management:** detailed layout setup for label impositions, including front/back alignment, gap across, rewind directions per process stage and cutting marks.
- **Role-Based Access Control:** secure technical data with permission settings based on user roles—allowing only authorized personnel to view or modify sensitive production specifications.
- **Advanced Search & Filtering Tools:** quickly locate specific technical sheets with robust search tools and filtering options. No more wasted time digging through folders.
- **Possibility of integration with external systems,** such as prepress workflow software, for seamless data exchange and enhanced workflow efficiency
- **Collaborative Editing & Review:** enables multiple team members to work simultaneously on various sections of the label specification, supporting real-time collaboration, versioning, and approvals.



# Graphical Process Management

Sistrade Graphical Process Management is designed to streamline and optimize the entire workflow of printing processes, from specifications intake to final approval. The module aims to enhance efficiency, and effectively manage resources and costs in this preliminary step.

These functionalities support the efficient management of the graphical processes, ensuring that production runs smoothly, meets quality standards, and remains cost-effective, while keeping track on each product status connected with the customer interaction.



## Key Benefits

- Simplify and optimize each step of the printing process, ensuring a smooth transition between steps.
- Improve operational efficiency by automating tasks, optimizing resource allocation, and minimizing downtime of the different resources involved.
- Maintain high-quality standards through effective process management.

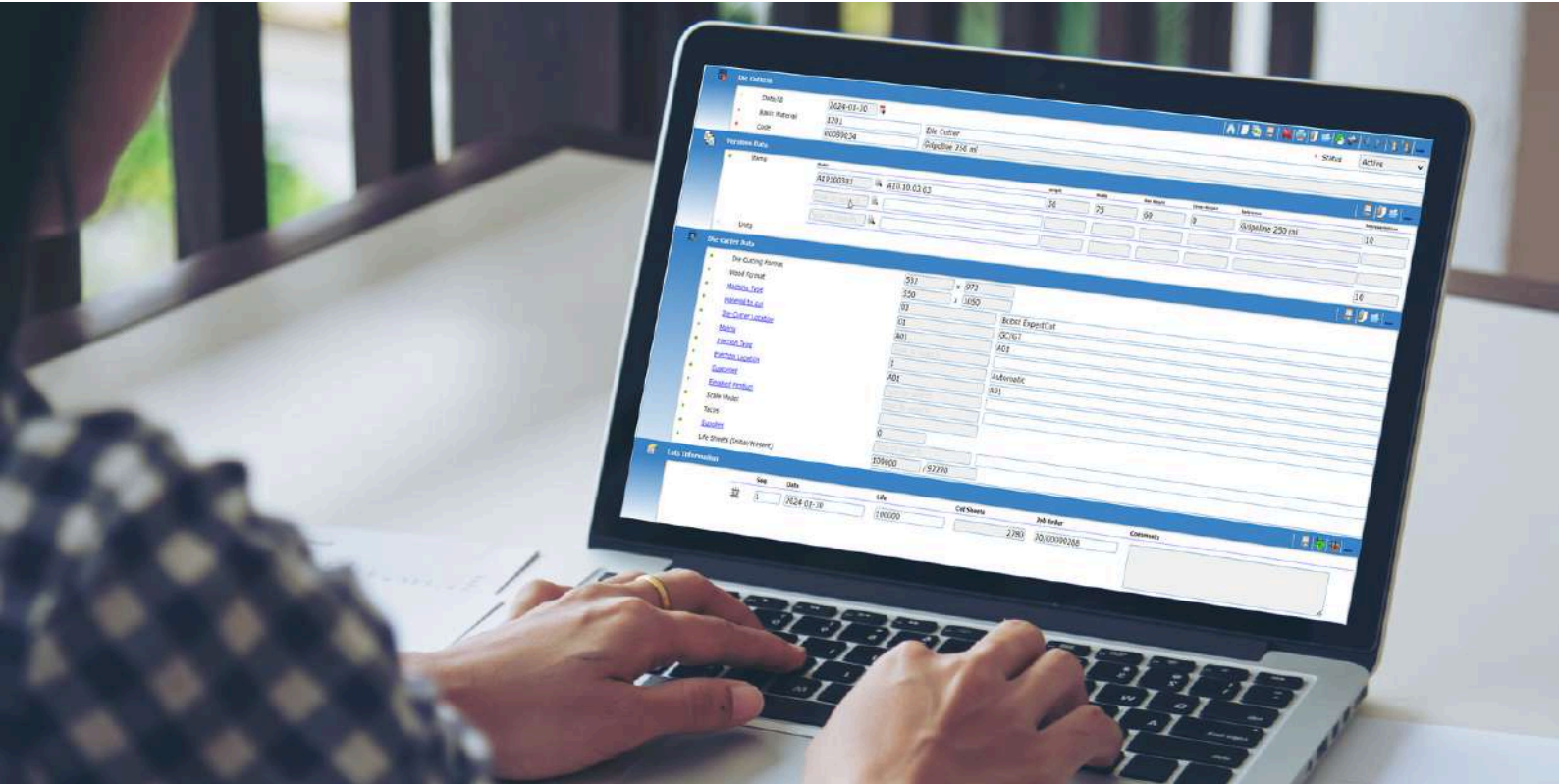
## Main Features

- Input and management of customer products, including detailed technical specifications
- Definition of the specific colors/inks and/or varnishes/coatings that will be used on each product
- Real-time tracking of status, from receipt to approval, ensuring transparency and timely updates
- Complete and configurable workflow of the possible steps of the product approval process
- Easier scheduling of several stages up to customer approval
- Overview of scheduled tasks and helps avoid scheduling conflicts and resource overuse
- Management of labor allocation, ensuring resources are available and efficiently used for each job
- Automation of repetitive tasks and workflows to reduce production time and minimize errors, through the integration with external software solutions
- Generation of detailed reports on various aspects of the graphical process, such as approval rate, approval delay, rejection rate, all by responsible resource and/or product type
- KPIs for evaluating and continuously improving the efficiency and quality of the process
- Connection with other systems, such as Prepress Workflow Software and CRM, to ensure seamless data flow and enhance overall business operations

# Sistrade Software for Label Printing

## Tools and Dies Management

This software feature comprehends several components to enhance productivity and maintain the efficiency and longevity of printing and packaging tools and dies.



## Main Features

- Tool and Die Inventory Management tracks the location, status, and usage of tools and dies.
- Alerts for maintenance schedules and inventory levels
- Scheduling the use of tools and dies, based on production requirements, helping to optimize workflow and reduce downtime
- Monitoring and logging maintenance activities, scheduling preventive maintenance and tracking repair history to ensure tools and dies are in good working condition, thus managing the individual lifetime of each one
- Managing and storing documentation related to tools and dies, including manuals, compliance certificates and safety data
- Interaction between production planning and production management to ensure tools and dies are aligned with production schedules and requirements
- Providing reports and analytics on tool and die usage, maintenance costs and performance metrics to aid decision-making and cost management

## MRP - Material Requirements Planning

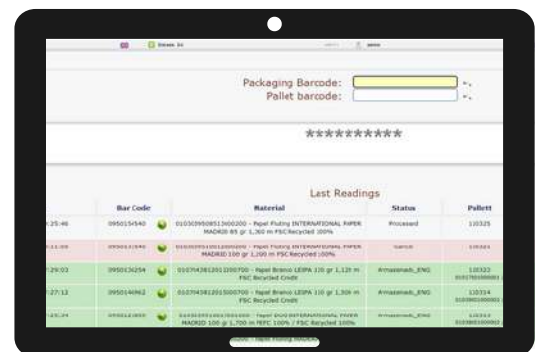
Plan material requirements and purchase orders with an advanced algorithm, ensuring the availability of components and materials.

- Warehouse needs analysis with stock replenishment alerts
- Material requirements planning
- Material selection and reservation
- Calculation of purchasing and production requirements
- Issuance of material requisitions
- Calculation of purchasing and manufacturing dates and deadlines
- Alerts for potential non-conformities in customer delivery deadlines

## Material Management and Traceability

Ensure complete traceability of materials from receipt to shipment, facilitating audits and compliance with regulatory standards.

- Recording item movements via barcodes
- Searching and analyzing movements by item
- Material exits for production and their respective returns
- Splitting and merging lots
- Managing item locations in the warehouse



## Mobile Warehouse Management

This tool allows real-time updates and mobility of crucial information for effective management of different types of warehouses using mobile devices with built-in barcode readers.

- Material receipt and loading
- Lot information, consumption history and details
- Location search
- Alerts for stock inconsistencies
- Material traceability with barcode technology
- Picking & Packing List
- Registration of finished product exit and issue of delivery note





# Sistrade Software for Label Printing

## FSC/PEFC Certification

Effectively manage FSC (Forest Stewardship Council) and PEFC (Programme for the Endorsement of Forest Certification) certifications, ensuring the products come from responsibly managed forests and comply with environmental, social, and economic standards.

- Automatic tracking of FSC/PEFC certifications, ensuring compliance with regulatory requirements
- Organization and storage of the necessary documentation related to certifications, audits and suppliers, facilitating access, updating and sharing during inspections
- Tools for internal and external audits preparation, with comprehensive reporting for monitoring compliance status
- Tracking of certified materials throughout the company, ensuring the entire production process complies to FSC/PEFC standards

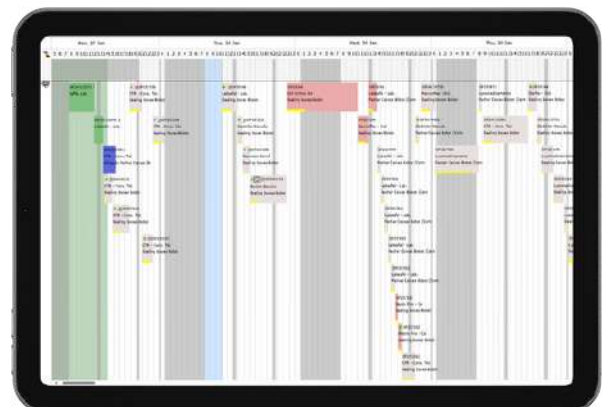


By automating and simplifying the certification management process, companies ensure compliance with the FSC/PEFC, avoiding sanctions and improving their reputation regarding sustainability

## Scheduling

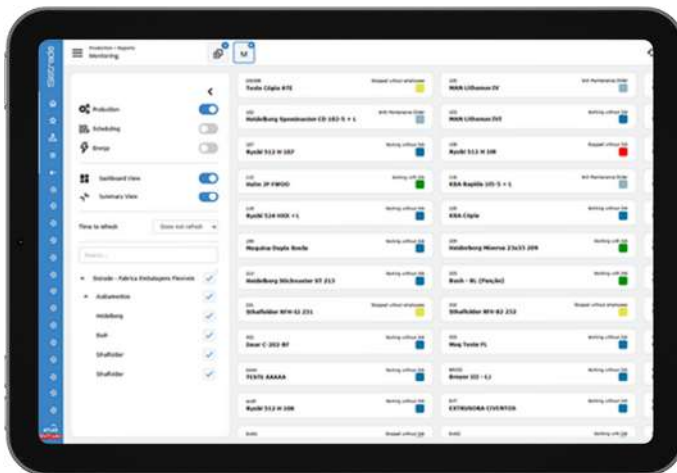
Achieve production efficiency within the established deadlines by optimizing your company's activities and managing resources in an economical and balanced way.

- Dynamic gantt scheduling of job orders
- Planning criterization
- Scheduling activities per employee
- Optimization Tool (AI)
- Scenarios simulation
- Load chart
- Assisted employee scheduling
- Multi-user & multi-plant scheduling
- Integration with Sistrade Data Acquisition System (DAS)



## MES - Manufacturing Execution System

- Automatic Data Collection via IoT, industrial touch screen consoles or mobile devices
- Overall Equipment Effectiveness (OEE) in real-time for continuous optimization
- Manual or automatic recording of production quantities and material consumption
- Raw material consumption recording, from manual to fully automatic
- Accurate calculation of industrial costs, including direct and indirect costs
- Product quality assurance, including traceability of non-conformities and equipment calibration
- Comprehensive control of preventive and corrective maintenance and incident analysis
- Interactive production reports to methodically analyse productivity and support decision-making



## Shipping Management

Optimize the shipping process with automatic and manual planning, ensuring efficient resource allocation, route optimization, cost reduction, and other personalized adjustments to meet customer-specific requirements while guaranteeing timely delivery.



- Automatic generation of loading groups
- Automatic vehicle selection according to planned deliveries
- Issuance and editing of delivery notes
- Change the shipping preparation documents in the Picking List
- Consolidation of materials to be delivered

# Sistrade Software for Label Printing

## Business Intelligence

The Sistrade Business Intelligence (BI) module is designed to support managers and analysis teams, offering a clear, real-time view of all company processes, from production to financial management, facilitating quicker and more effective strategic decision-making.

- **Make informed and rapid decisions** with access to real-time data, obtaining a clear and accurate view of your company
- **Customize the visualization** of the most important information through dynamic dashboards tailored to your needs
- **Quickly identify inefficiencies** and increase productivity by optimizing processes and reducing costs
- **Personalize the most relevant KPIs** for your role, ensuring you always have the correct metrics at your disposal
- **Obtain a comprehensive view** of your company's performance, with in-depth and strategic analysis across various dimensions
- **Focus on continuous improvement** by measuring KPIs in real-time and adjusting strategies swiftly

## Business Analysis



- Administrative & Financial Area
- Accounting & Treasury
- Fixed Assets
- Human Resources
- Estimating & Commercial Management
- Procurement & Warehouse
- Sales & Expedition
- Production Management
- Quality Control
- Equipment Maintenance



## Solutions



# SisTrade®

Travessa da Prelada, 511  
4250-380 Porto - Portugal  
inov@sistrade.com

## Spain

Parque Empresarial La Moraleja  
Avenida de Europa, 19 3º A  
28108 Madrid - Spain  
madrid@sistrade.com

## Slovenia

Rozna dolina, Cesta II/29  
1000 Ljubljana - Slovenia  
ljubljana@sistrade.com

## France

39 rue du Mûrier (BP 125)  
37540 Saint-Cyr-sur-Loire - France  
paris@sistrade.com

## Serbia

Birčaninova, 40  
11000 Belgrade - Serbia  
belgrade@sistrade.com

## Germany

Krümmlingsweg 10a  
D-63110 Rodgau - Germany  
frankfurt@sistrade.com

## Turkey

Dikilitaş Mahallesi, Hakki Yeten  
Cad. 10/N Sel. Plaza Kat:6  
34349 Besiktas - Turkey  
istanbul@sistrade.com

## Poland

Al. Niepodległości, 69 - 7º  
02-626 Warsaw - Poland  
warsaw@sistrade.com

