



# Sistrade Software

## Corrugated Cardboard Industry

MIS | ERP

# GET TO KNOW SISTRADE

SISTRADE -Software Consulting, S.A. is an international company specialized in software development and consulting services for different activity sectors, namely for industry and services. The main goal of SISTRADE is to supply the market with the best information systems tools to create value in the companies, improving and optimizing their performance in all their processes.

We focus all our activity on quality and improvement, cultivating research and innovation in every action and we are committed to the best information security practices. Our Management System demonstrates our involvement and commitment, in addition to being certified by the normative references NP EN ISO 9001:2015, NP4457:2007 and ISO 27001.

## Technology

All Sistrade software solutions are supported by Microsoft's SQL Server database. This is a relational database that optimises IT environments, as it provides a more secure and reliable platform for analysis and data management. SQL Server delivers fundamental advances in information repository technology for collaborative users adding value to the organisations.

## Markets

Printing & Packaging Industry  
Label Printing Industry  
Flexible Packaging Industry  
Plastic Extrusion Industry  
Corrugated Cardboard Industry  
Screen Printing Industry  
Security Printing Industry  
Publishing Industry  
Metalworking Industry  
Textile Industry  
Wire and Cable Industry  
Food Industry  
Service Sector  
Commercial Sector



## Key Points



**+ 5000 Users**



**+ 30 Countries**



**4 Continents**



**Industry 4.0**



**Optimized for Corrugated  
Cardboard**



**SQL Server**



**Cloud Based**



**Easy Interface**



**Multi-device**



**Flexible and adaptable**



**+ 15 Languages**



**Business Intelligence**

# Sistrade Software - Corrugated Cardboard

## Internal Workflow





# Software for Corrugated Cardboard Industry



In the corrugated cardboard industry, efficiency and precision are key to success. In this context, SISTRADE offers a comprehensive, vertical solution designed to optimise every stage of the production process.

Providing effective management, combining real-time supervision functionalities, product traceability, data analysis and KPI-driven decision-making, the system offers a comprehensive and detailed view of all operations.

From production planning to quality control and stock management, every aspect of the process is monitored and optimised. This not only increases operational efficiency, but also reduces costs, minimises waste and ensures product compliance.

## Main features

- Structured definition of the product's composition, specifying the papers to be used for each layer (both liners and fluting)
- Possibility of technically estimating any type of corrugated cardboard product, whether in reel, format/board or to include directly in packaging production
- Dynamic price list by product type, which can be linked to a specific customer or used as a general list
- Customer order registration assistant, linked to the price list
- Corrugated cardboard planning tool for optimising the production process
- Planning of the different production processes, including the corrugator, whether carried out in-line or in overload, with automatic sequencing based on different criteria
- Assisted recording of quantities produced, via connection to the corrugator
- Packing and palletising assistant connected to dispatch and load planning
- Automatic issue of identification labels for each product, either with standard layouts or customer-specific layouts

# Sistrade Software - Corrugated Cardboard

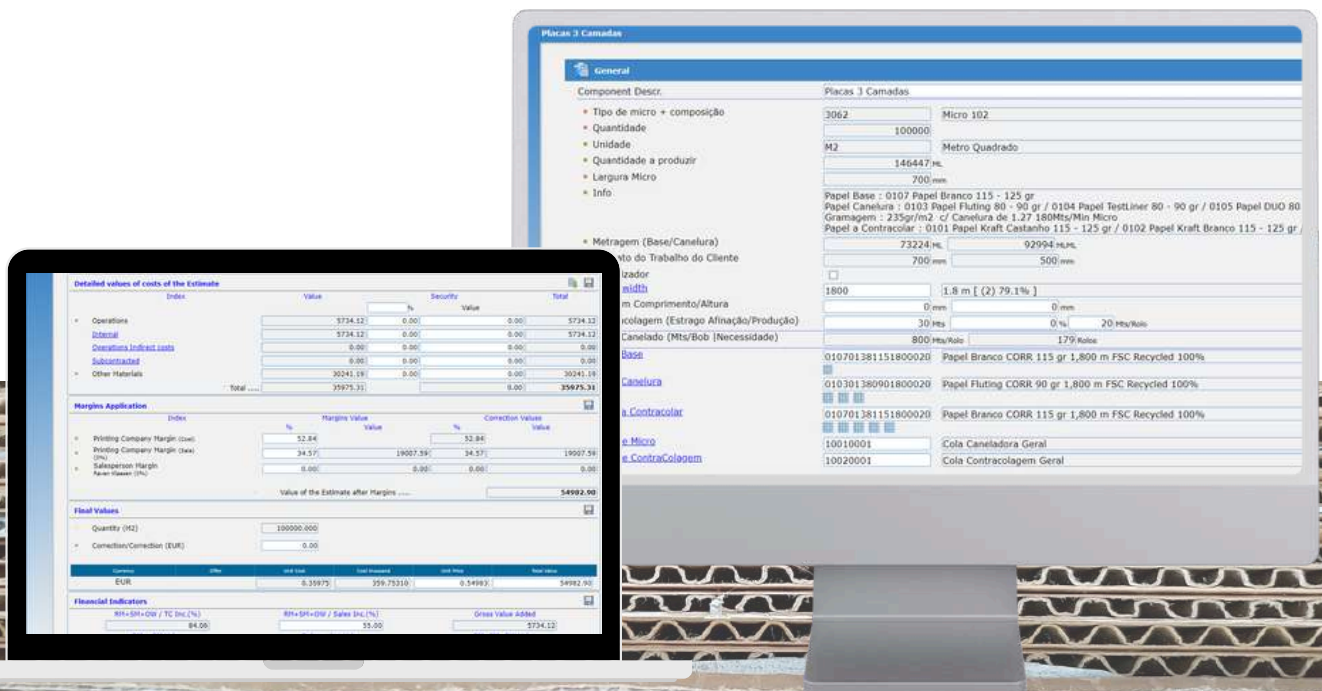
## Estimate Management

Sistrade software allows you to create estimates that mention the details of production and product characteristics, including all the relevant costs of each production process, applying the following sequence of steps:



Sistrade software helps users to make a quick and detailed estimate, simulating other quantities and sending it directly to the customer for approval.

If the product is corrugated cardboard without further processing, it is possible to estimate different types of corrugated cardboard product, whether in reels or formats, with or without creases and with more or fewer layers.

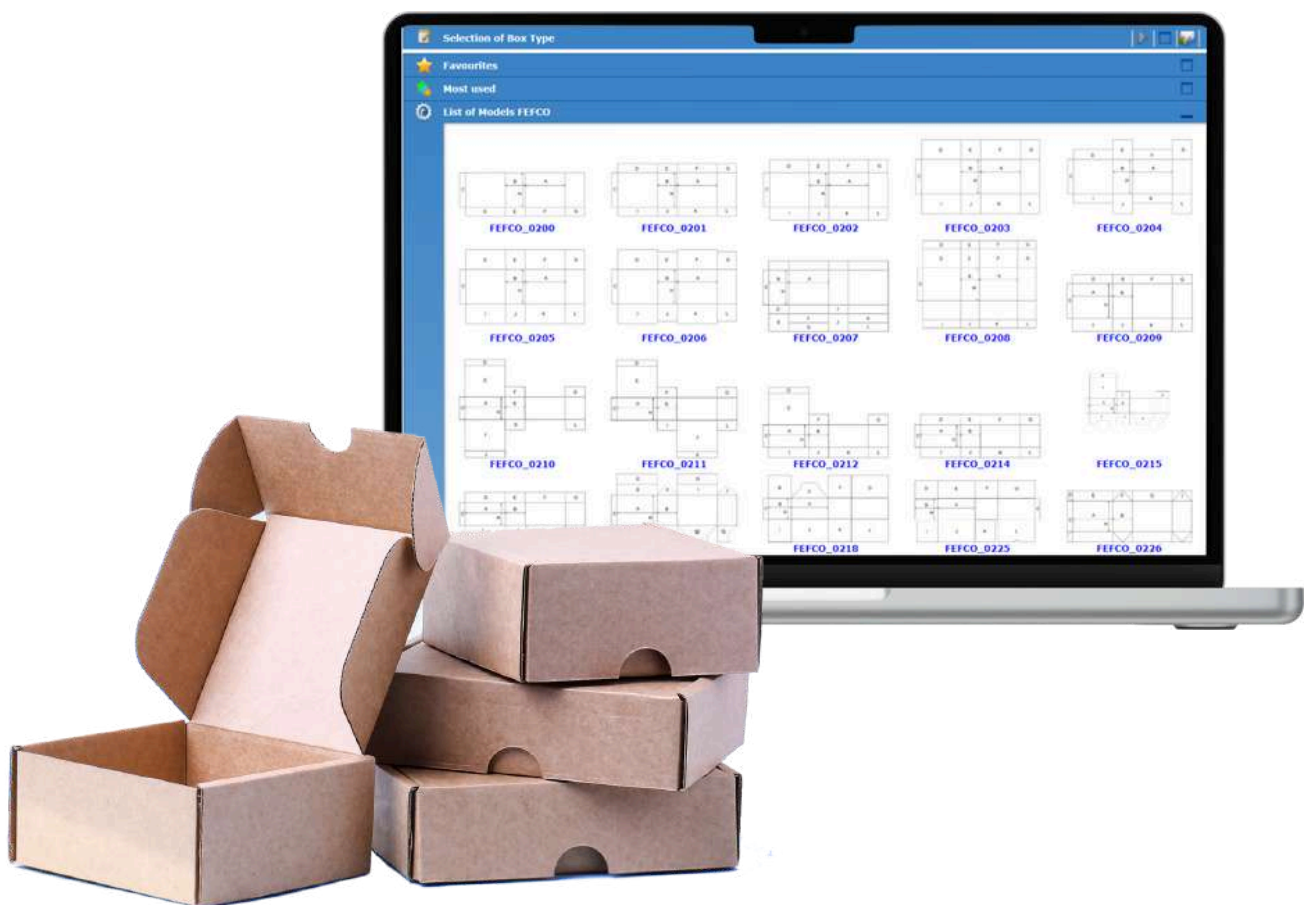


# Estimate Management

## Corrugated Cardboard Boxes

The process of estimating corrugated cardboard boxes starts with entering the relevant product data, including information on the type and dimensions of the box to be produced, specifications of the corrugated cardboard material to be used, printing and finishing requirements, desired quantity and any other project-specific details.

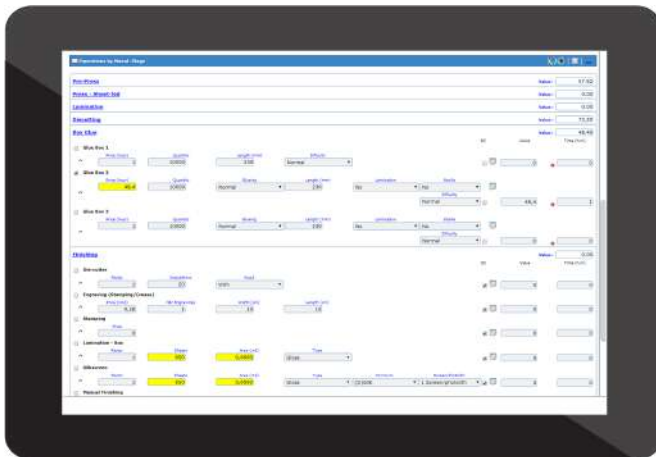
The FEFCO (Federation of European Corrugated Board Manufacturers) layout library in Sistrade software makes it easy to calculate the dimensions of the corrugated board to be produced, as well as the creases to be made in it (if necessary), in the quantities required:





# Sistrade Software - Corrugated Cardboard

## Estimate Management



### Multiple scenario comparison

- Compare different optimizations and paper sizes to choose the best combination that fits your needs

### Tool management

- Manage die-cutters according to the desired final product

### Inks and varnish consumption

- Estimate the costs of ink and varnish combination in the production of your products

### Fully automated operations cost and duration calculation

- Determine the costs per operation automatically and know which processes need to be optimized

### Final values and margins insertion

- Application of final margins, with margin index, commissions, administrative costs, fixed costs, rappel, etc;
- Predefined margins can be set

### Other quantities simulation

- This tool allows the user to simulate the production of extra quantities and to know automatically its possible costs and to see if its production is profitable



# Estimate - Packing, palletising and truck/container definition

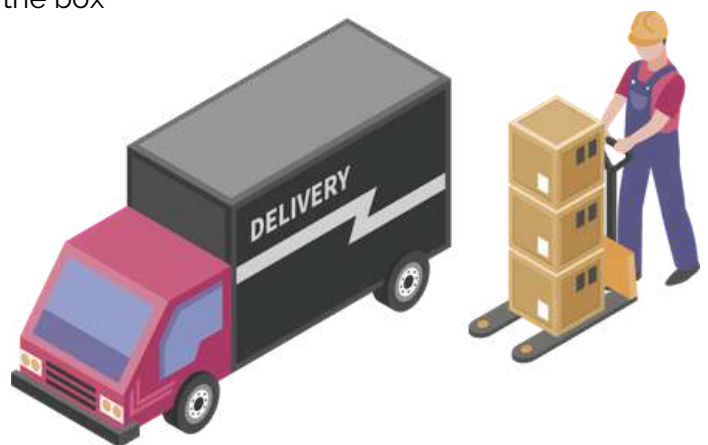


## Box definition

- Possibility of defining all the information of the product that is being packed
- Type of carton/corrugated cardboard box
- Box dimensions (can be automatically calculated according to the product's specifications)
- Quantity of products per box (can also be calculated)
- Possible forms of assembling the product inside the box

## Pallet definition

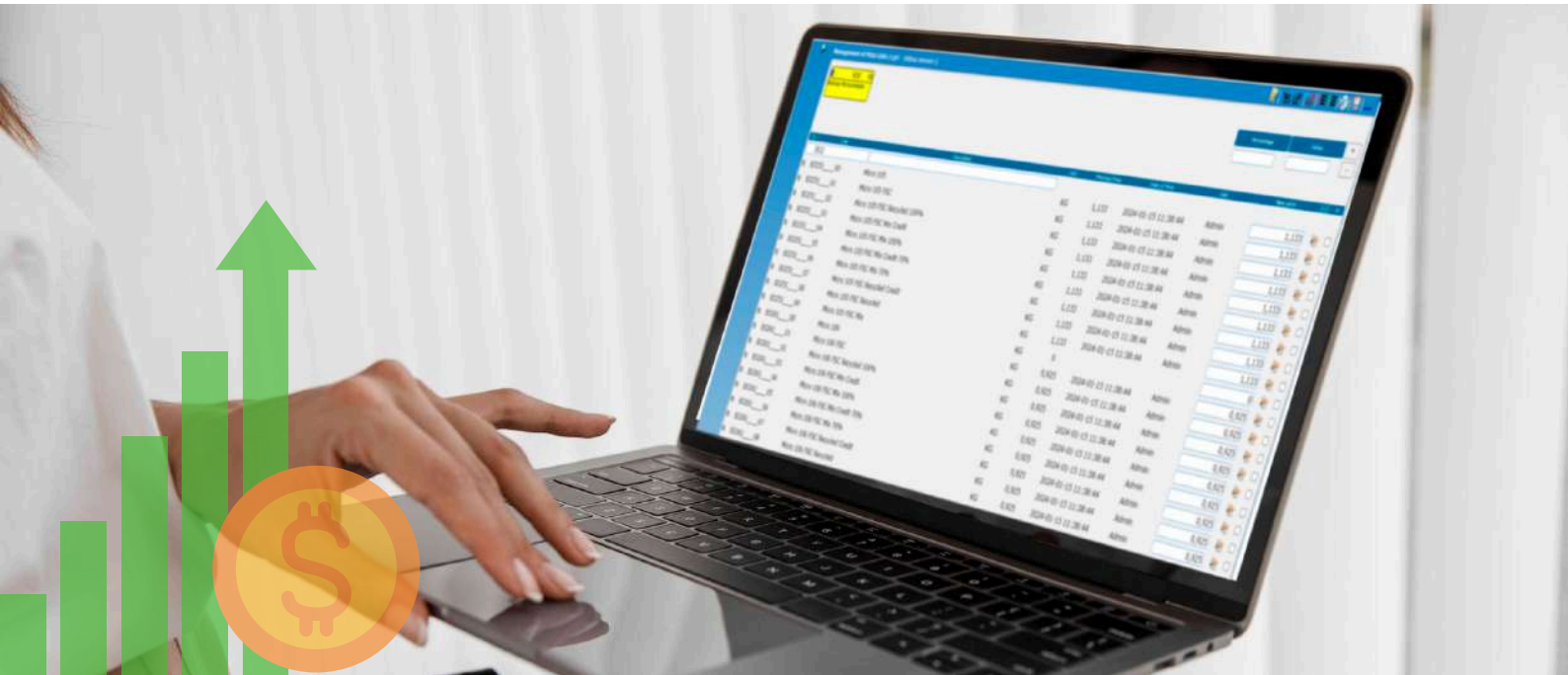
- Definition of the type and dimensions of the pallet
- Distribution of the boxes in the pallet
- Definition of the number of layers by pallet
- Definition of the number necessary pallets
- Definition of the truck/container and the number of pallets per cargo



# Sistrade Software - Corrugated Cardboard

## Dynamic Price Lists

Dynamic price lists are a feature that allows prices to be adjusted automatically and flexibly based on different criteria and conditions. This option is particularly useful since prices can vary according to various factors, such as sales volume, discounts applied, contractual conditions, etc.



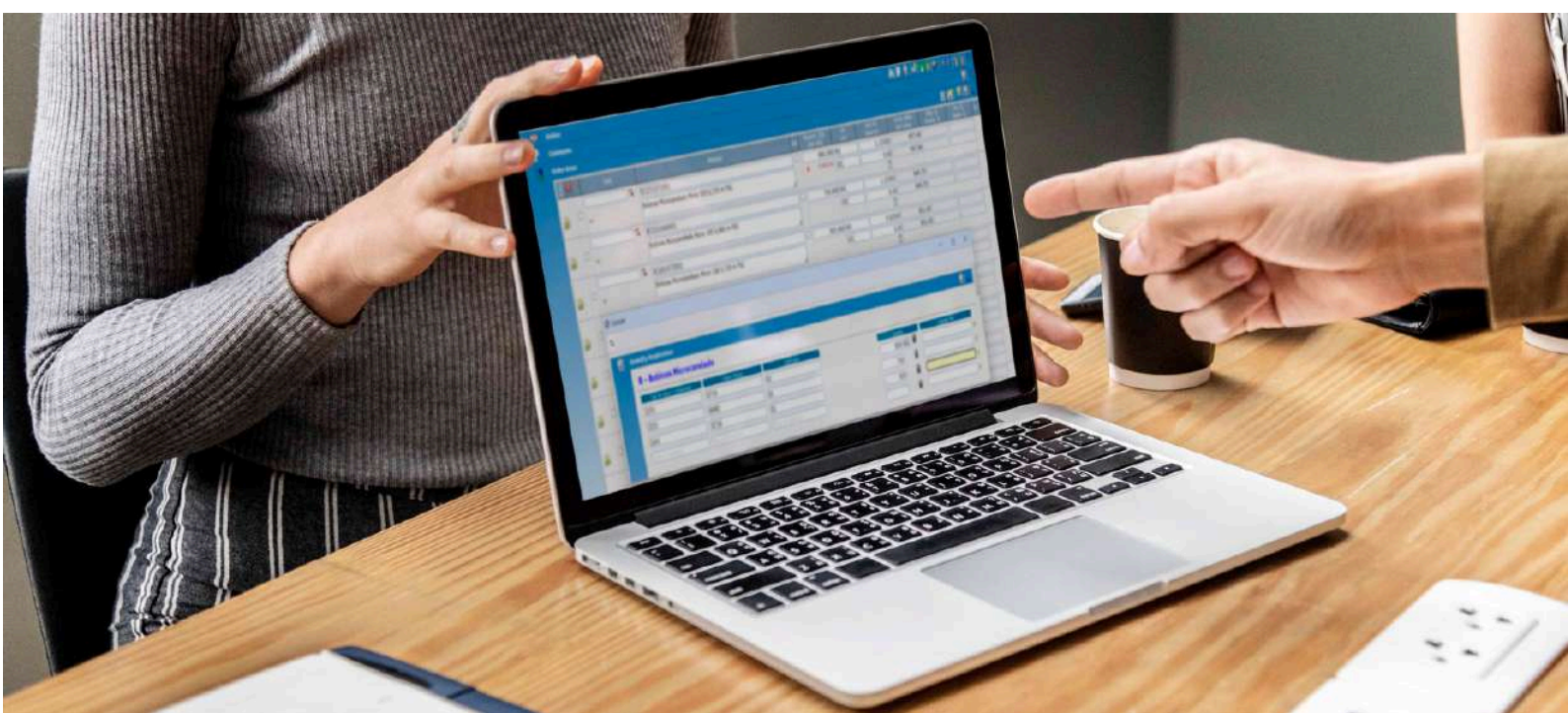
With dynamic pricing tables, you can define a pricing structure that intelligently adapts to your business needs. For example, you can establish progressive discounts based on the volume of products purchased, set differentiated prices for different customers or market segments, or even adjust prices automatically in response to changes in the market or competitors.

In addition, dynamic price lists allow for more efficient price management, since updates can be made centrally and instantly, ensuring that all prices for all products and customers are effectively in line with the company's pricing policy.

In short, dynamic pricing tables are a powerful tool for optimising price management, providing greater flexibility, control and efficiency in defining and updating the prices of the products or services offered by the company.

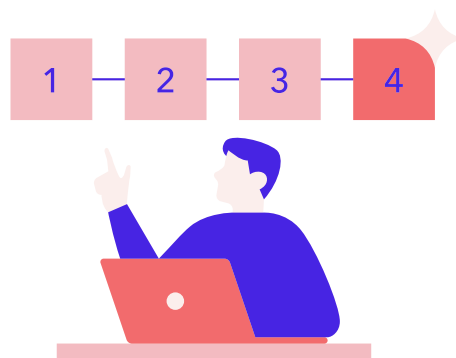
## Customer Orders

In Sistrade Software, the process of registering customer orders is made easier through the order registration wizard functionality, which is designed to make the order registration process intuitive and efficient.



This wizard guides the user step by step through the process of registering a new order, helping them to enter all the necessary information correctly and completely. While filling in the fields, the wizard can provide suggestions based on data previously recorded in the system, making it easier to enter repetitive information and reducing the risk of errors.

In addition, it can include real-time validations to ensure that the data entered is consistent and accurate.





# Sistrade Software - Corrugated Cardboard

## Optimisation of Corrugated Cardboard Production

Sistrade software offers the corrugated cardboard planning tool to optimise the cutting process and material utilisation during corrugated cardboard production.



Based on the different customer orders, this feature analyses the production specifications, such as the dimensions of the products to be manufactured, the availability of material and any operational restrictions, such as machine or material constraints.

From this information, the software calculates the most efficient arrangement of the products ordered, so as to minimise trim waste and maximise material utilisation. The aim is to find the layout and sequencing that makes it possible to produce all the necessary products with the least amount of material possible, avoiding unnecessary cuts or empty spaces, thus obtaining the best performance from the corrugator.

This functionality is essential for companies working in corrugated cardboard production, as it helps to reduce costs, minimise material waste and increase the operational efficiency of the production process.



## Stocks and Purchases

Sistrade software enables efficient and precise control of the materials needed for corrugated cardboard production by monitoring the stock of raw materials, usually paper reels, as well as other necessary materials such as glues and secondary packaging.



- **Complete stock and purchasing management**
- **Product and supplier management**
- **Inventory**
- **Mobile management software (incoming/outgoing/transfer of materials)**

In order to optimise the corrugator's needs, Sistrade software will suggest the reels to be used, taking into account the oldest reels in stock or those already partially consumed to be used first, in this way helping to reduce stock levels of partial reels or the waste created by old reels.

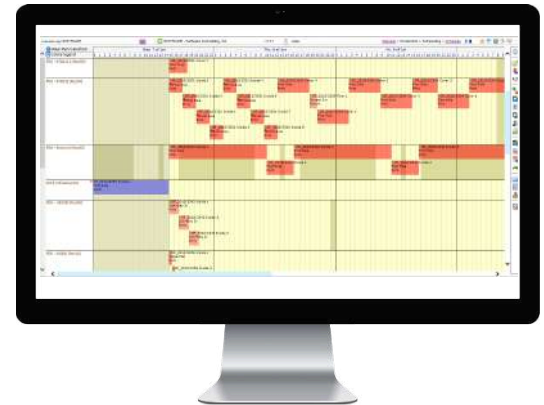
Material entries and exits, whether by purchase, in-house production or use in specific orders are recorded in the system, helping to forecast future material requirements based on production needs and current orders, helping to avoid low stock levels or excess inventory. In this way, the system can also provide detailed information on the history of material movement, enabling consumption analyses, trend identification and purchase optimisation. In addition, it can generate automatic alerts when stock levels reach certain levels, facilitating timely restocking.

# Sistrade Software - Corrugated Cardboard

## Production Management

### Scheduling

- Gantt scheduling of job orders
- Sequencing of operations by drag & drop or in tabular format
- Assisted employee scheduling
- Matrix-based scheduling of operations by employee
- Multi-user scheduling
- Multiple Drag & Drop in Gantt Chart
- Cost Scenarios
- Multi-plant
- Scenarios simulation



### MES - Manufacturing Execution System

Sistrade software works on the shop floor, controlling all reel movements and recording paper consumption, while managing and monitoring operations. At the same time, all the data collected on the shop floor is available for viewing via various data analysis and visualisation tools, either directly on the shop floor via Andon Boards placed in strategic areas, or in an analysis environment via numerous customisable reports or Dashboards.

Paper reels are validated when they are loaded into the corrugator, and incorrect reels are rejected or require special authorisation before they can be used. Recording these reels from the corrugator enables traceability in subsequent processes, allowing full traceability from the final product to the raw material reels used.



## Manufacturing 4.0



SISTRADe has the right tool to push your company to the Industry 4.0, optimizing, automating, and controlling your production line. One of Sistrade's key applications is Manufacturing Execution System (MES), which delivers solutions to plan, collect data, supervise, and control the industrial process.

### Supervisory Control and Data Acquisition (SCADA)

- Local or remote supervision: multi-factory
- Real-time information about the machine status
- Identification of employees working on the machine
- Identification of the job order in progress
- Produced and rejected quantities
- Operations carried out per job order
- Events and occurrences per machine and per job order
- Display of speed per machine in real-time
- Charts of speed history
- Automatic record of downtimes and their reasons
- Real time of preparation and production
- Analysis of profitability
- Occupancy rates
- Analyze productive vs. unproductive time
- Efficiency per machine



# Sistrade Software - Corrugated Cardboard

## Standard Reports and Report Generator

Sistrade software solution provides various standard reports for all of the areas of the system, allowing a quick access to key information on the company.



### Sales

- Sales ranking, analysis and evolution
- Commissions report
- Return on sales
- Documents tracking
- Orders evolution
- Delivery time control
- Sales by basic material/product



### Procurement

- Control of purchases orders/receptions
- Supplier prices catalogue
- Control of supplier invoices
- Inventory
- Subcontracts costs expected/real
- Annual purchase invoicing
- Monthly/accumulated purchases
- ABC supplier analysis



### Production

- Operator and machine productivity
- Expected production time vs real time
- Real-time beginning and end of production
- Real-time information about machine status
- Machine history
- Produced and rejected quantity
- Evaluation of KPIs



### Accounting

- Statements
- Accumulated
- Trial Balances – General Ledger
- Fiscal reports
- Income statement



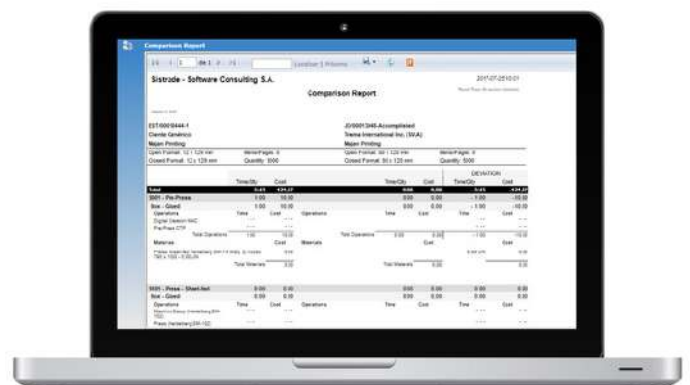
### Treasury

- Current accounts
- Statement of settlements
- Due date and collection notices
- Vendors/agents
- Banks and cash



### Report Generator

- Sistrade software allows the user to generate specific reports from any module according to its needs



Forecasted VS Accomplished



## Dashboards

All modules have the most relevant indicators to be presented for each area, such as the total of invoicing in sales, the occupation of the stocks in the warehouses, approved production orders in production, the total of debit and credit in accounting, the number of active employees in human resources and many others.

With this important tool users can analyze important information of the company filtered by:

- Week/month/quarter/semester/year/financial year and other periods
- Client/vendor/country

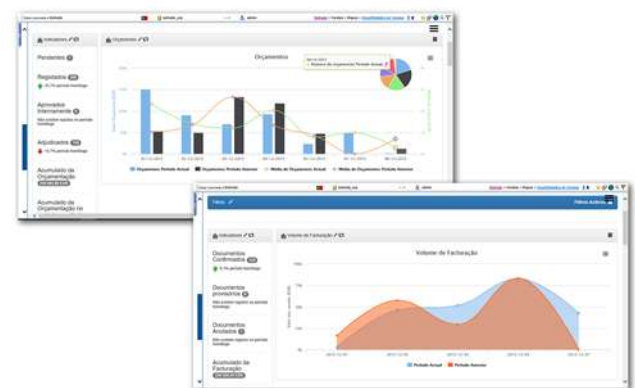
## Estimates:

- Estimates requested, assigned, approved and granted
- Estimates response time
- Productions (new vs repeat) and by type



## Orders:

- Orders volume and approved for production
- Pending credit approval
- Return on sales
- Order book
- Orders by country



## Invoicing:

- Sales volume
- Confirmed, provisional and cancelled documents
- Accumulated billing
- Sales ranking (by client and by product)
- Sales by vendor and country

## Key information available for:

- CRM
- Sales
- Procurement
- Stocks
- Production
- Equipment Maintenance
- Quality Control
- Treasury
- Accounting
- Human Resources
- Fixed Assets

# Sistrade Software - Corrugated Cardboard

## Business Intelligence

Sistrade Business Intelligence is a tool that collects and compiles large amounts of data in order to generate relevant information regarding the companies' operations. Through this module, companies have a better understanding of the daily operations as well as their environment.

Business Intelligence has a wide application when applied to an organization, as for example, Business, Finances, Sales, Purchases or Production.



### Sistrade Solution

- Perform analysis, by crossing multiple dimensions and metrics
- Apply filters to any dimension of analysis
- Results displayed analytically and graphically using any device: PC, tablet, smartphone
- Information updated hourly, daily or on weekly basis
- Set latency in order to generate, correct and updated data results
- Export data results to PDF, Excel and Word files

### Sales Dashboards

- Analyse sales by profit margin
- Article invoicing
- Payments to suppliers
- Receipts from customers

### Purchases Dashboards

- Analyse the major suppliers
- Most purchased products
- Inventory
- View inventory turnover rate

### Production Dashboards

- Deadline compliance rate
- Job order costs (actual cost vs estimated vs sales value)
- Setup time rate, percentage of setup time over the total production
- Availability ratio: time machine/section/plant should work vs time it is working



# Sistrade Software Solutions

## Commercial Management & Estimating

Estimating  
Customer Orders  
Shipping  
Invoicing  
CRM

## Stocks & Purchases Management

MRP  
Purchase Management  
Stock Management  
Supplier Management  
WMS

## Production Management

Scheduling  
Shop Floor Data Collection  
Industrial Cost  
Job Order Management

## Administrative & Financial

Accounting  
Treasury  
Fixed Assets  
Human Resources  
Employee Portal

## Other characteristics

Equipment Maintenance  
Quality Control  
Eco-efficiency  
Energy Management  
RDI Management

Business Intelligence  
Project Management  
Dashboards  
Report Generator  
Web2Print



powered by **Sistrade**

## Porto - Headquarters

Travessa da Prelada, 511  
4250-380 Porto - Portugal  
inov@sistrade.com

## Madrid

Parque Empresarial La Moraleja  
Avenida de Europa, 19 3º A  
28108 Madrid - Spain  
madrid@sistrade.com

## Ljubljana

Rozna dolina, Cesta II/29  
1000 Ljubljana - Slovenia  
ljubljana@sistrade.com

## Paris

39 rue du Mûrier (BP 125)  
37540 Saint-Cyr-sur-Loire - France  
paris@sistrade.com

## Belgrade

Birčaninova, 40  
11000 Belgrade - Serbia  
belgrade@sistrade.com

## Frankfurt

Krümmlingsweg 10a  
D-63110 Rodgau - Germany  
frankfurt@sistrade.com

## Istanbul

Dikilitaş Mahallesi, Hakki Yeten  
Cad. 10/N Sel. Plaza Kat:6  
34349 Besiktas - Turkey  
istanbul@sistrade.com

## Warsaw

Al. Niepodległości, 69 - 7º  
02-626 Warsaw - Poland  
warsaw@sistrade.com

