



Sistrade Software

**Textile**

MIS | ERP

# GET TO KNOW SISTRADE

SISTRADE – Software Consulting, S.A. is an information systems company with know-how in software development and consulting service for different areas, including industrial companies. SISTRADE main goal is to offer the market the best information systems tools, in order to help its customers to improve their performance in all the critical business processes.

Sistrade® is a web-oriented solution that is ready to settle in the business-to-business world, enhancing and extending the market and promoting electronic trade among companies. By the means of features that ensure adherence to the digital economy through the interconnection with marketplaces, it aims at the conquest of new markets. The application interface is all web-based, it is available from an Internet browser which allows access anywhere in the world, simply using Internet access.

## Technology

All Sistrade® solutions use Microsoft SQL Server support database. It is a relational database which optimizes IT environments, providing a safe and reliable platform for data analysis and management. SQL Server delivers fundamental technological advances in terms of information repository for collaborative users and adds value to the organizations.

## Markets

Textile Industry  
Printing & Packaging Industry  
Labels Printing Industry  
Flexible Packaging Printing Industry  
Security Printing Industry  
Metalworking Industry  
Plastic Extrusion Industry  
Publishing Industry  
Wire and Cable Industry  
Beverage Industry  
Service sector



**SISTRADE is also certified in the standards NP 4457:2007 and ISO 9001:2015**



ID-0014/2010  
Travessa da Preliada, 511  
4250-380 Porto

ER-0343/2010

[WWW.SISTRADE.COM](http://WWW.SISTRADE.COM)

## Key Points



**+ 5000 Users**



**+ 30 Countries**



**4 Continents**



**Industry 4.0**



**Detailed Reports**



**SQL Server**



**Cloud Based**



**Easy Interface**



**Multi-device**



**Flexible and Adaptable**



**+ 20 Languages**



**Business Intelligence**

# Sistrade Software for Textile Industry



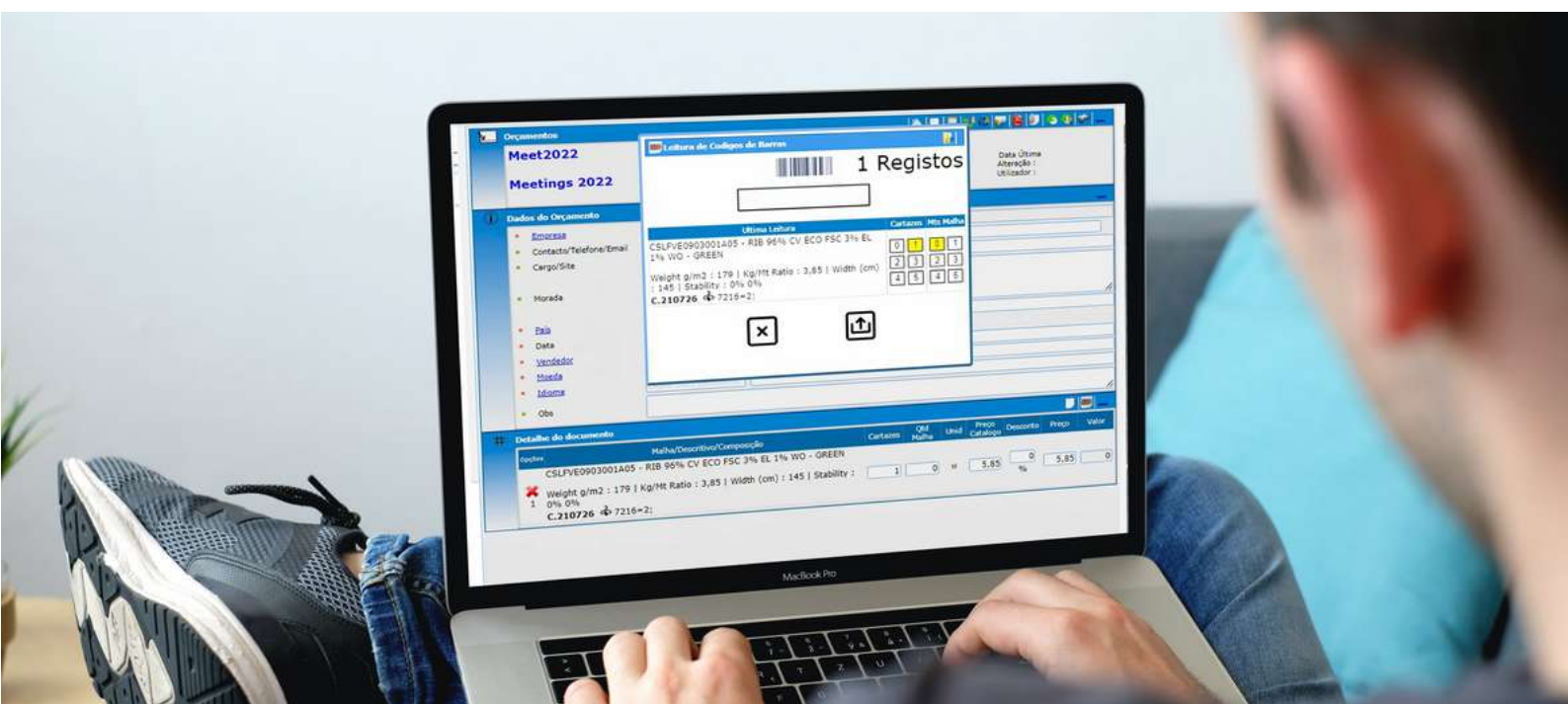
Fabric production is one of the oldest technologies developed by man, aiming to transform fibers into fabrics. This process has several stages, from converting fibers into yarns, yarns into fabrics, and finally into pieces of clothing, for home use, or even technical fabrics.

It is a constantly evolving industry, and to accompany this evolution we developed the Sistrade® software for Textile. With a user-friendly interface and a wide range of features, this software allows you a simple and effective management of all issues regarding production and many others.

Associated with the Textile module of Sistrade® software we also developed several other modules directly interconnected to Sistrade® software, in order to speed up all the organization's processes.



# Trade Fair Management



The trade fair management module was designed to answer our customers' growing need to manage the entire trade fair process, a complex process with a lot of bureaucracy and paperwork.

With a digital solution connected to the ERP, the user disposes of an easy and fast tool to manage the entire identification process of the customers' orders at a trade fair or commercial visit, avoiding the usual bureaucracy, such as delays in shipping orders.

The system allows you to request samples instantly, informing the back-office in real time to send them promptly.

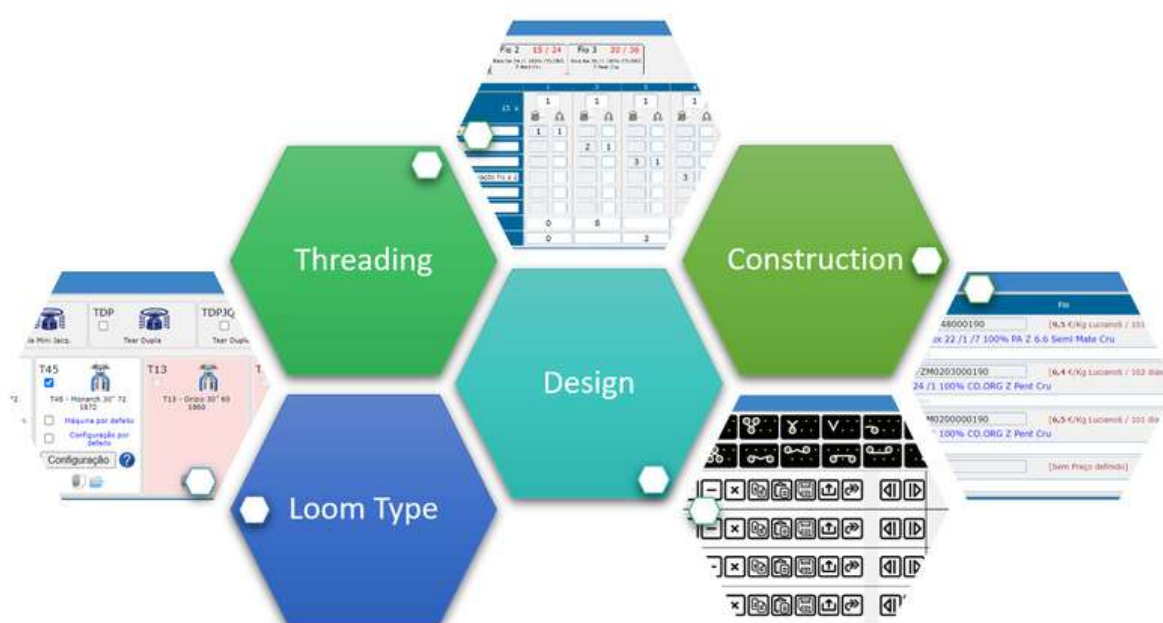
## Main Features:

- Business card scanning with mobile device
- Poster management with barcode
- Order barcode reading
- Stock management
- Pricing lists
- Email the order instantly to the customer



## Technical Data Sheets

Several types of fabrics can be created, affecting directly its characteristics. Due to the importance of these attributes, the Textile module guarantees the maintenance of the construction parameters in the data sheet in a simple and centralized way.

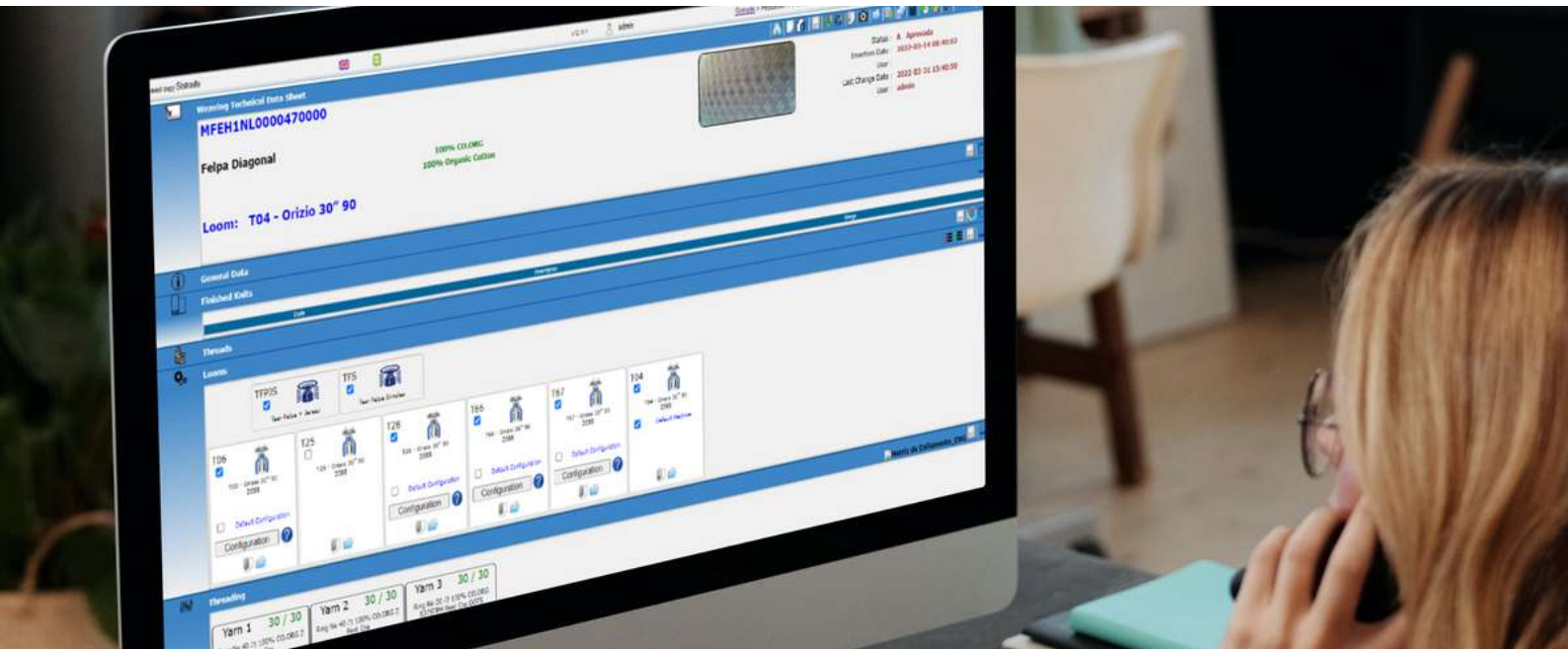


Through collaborative work with our partners, we identified a range of critical features in the construction of the fabrics, which resulted in the Technical Data Sheet. These settings simplify the mesh replication with the same characteristics.

The parameters saved in the data sheet range from, **the knitting type, set, inches, number of needles, weight by m<sup>2</sup>, speed, number of turns, machine, design/discharge** and many others.



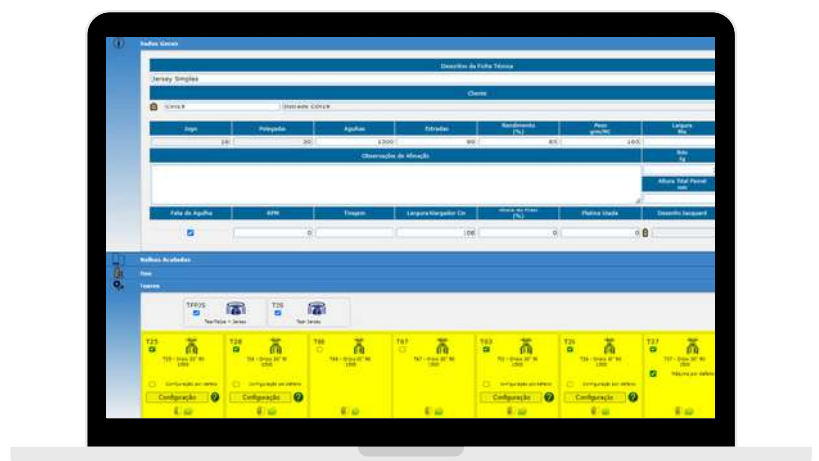
# Technical Data Sheets



## Machine Management

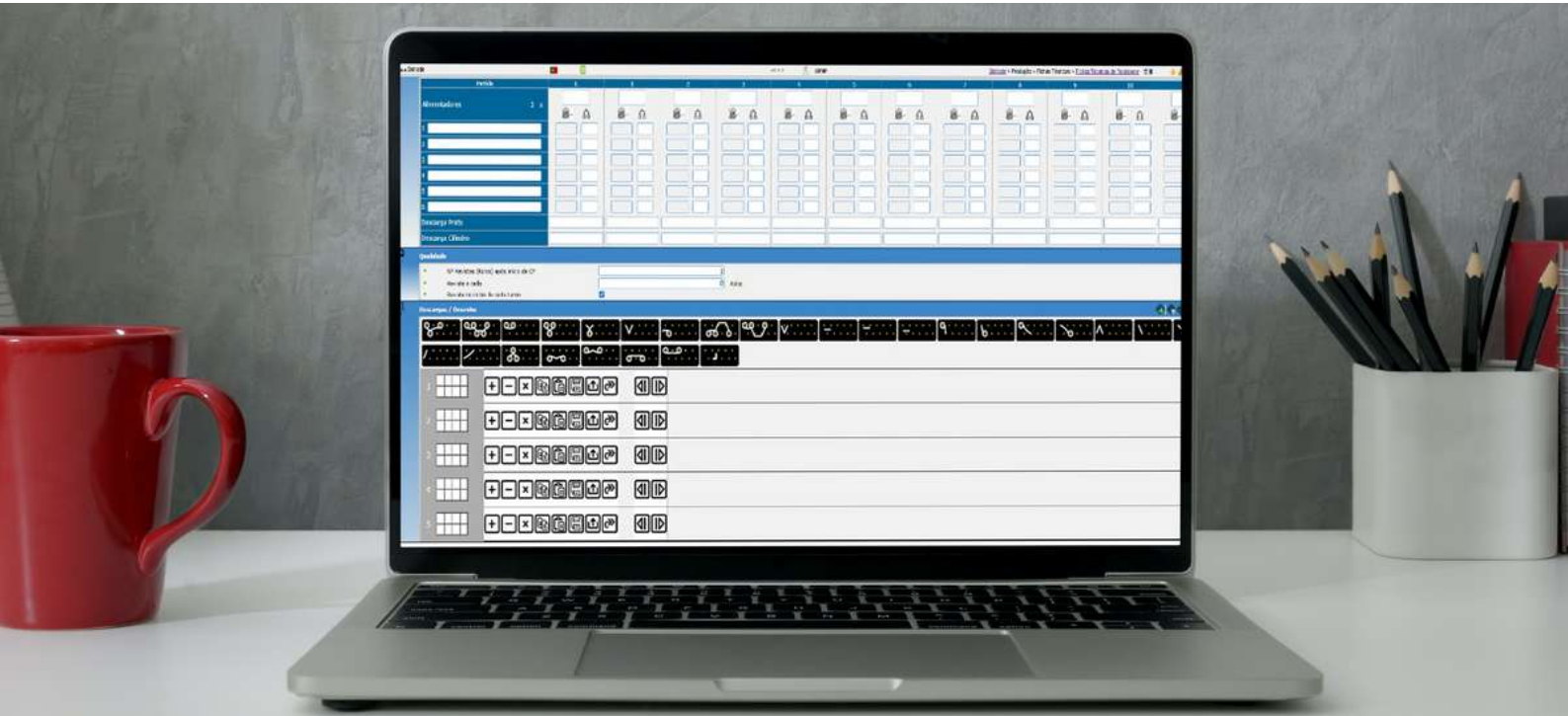
The machine management in the system enables the storage of the specific configuration of the Technical Sheet for each of the possible machines. User can change the selected machine when creating the production order, or during planning, the machine configured will be available in the manufacturing cockpit.

The system allows the upload of specific documentation for each equipment, which is relevant for its configuration or parameterization. All uploaded documents can be accessed by users in the shop floor data collection application included in the Production Management module.



# Sistrade Software for Textile Industry

## Technical Data Sheets



## Construction

The fabric construction characteristics, such as **yarns and threads, design, quality settings and finishing** are defined by the user.

### For each item, the system enables:

- The quantity of each component
- The thread entry sequence
- The design assigned to each yarn
- The finishing and costs of each mesh

All this information allows the user to estimate the product in a more realistic scenario.





## Finishing and Shipping Processes



For best control, all the documents generated during a sales process are accessible, including graphic elements identifying the type of activity, whether it is production, shipping or other.

### Finishing

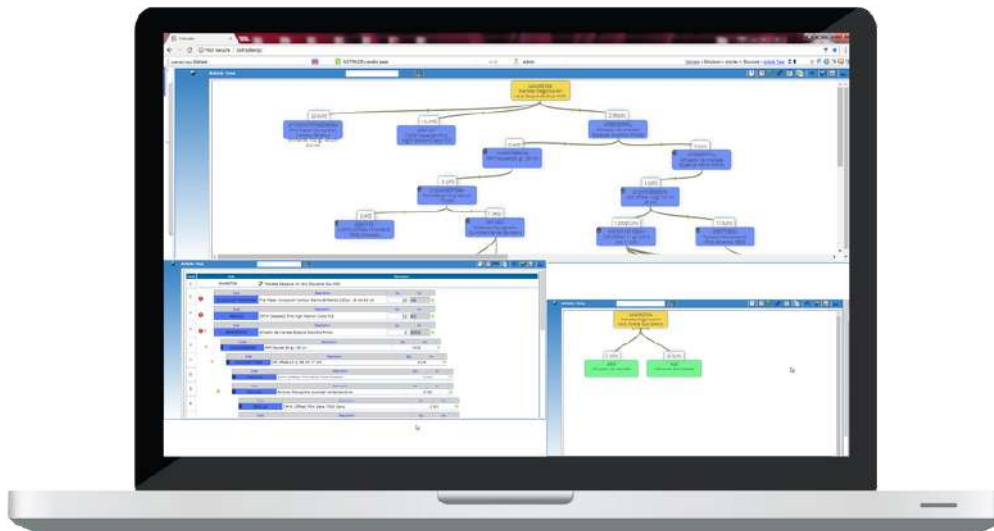
In the Textile module all processes can be managed as a typical production process. However, according to the market's high demand to manage these processes in an outsourcing perspective, we developed a specific solution to manage and control the entire process, from the purchase generation and expedition to the reception of the materials and quality control.

### Manufacturing

The cutting and sewing processes are managed as one operation in the production process, being possible to import cutting patterns, sizing tables, and other relevant documentation into the system, to control and centralize the information available to the users.

# Sistrade Software for Textile Industry

## MRP - Materials Requirement Planning



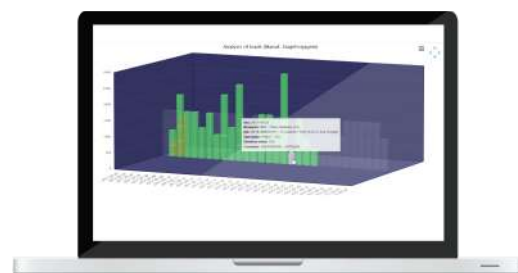
Through the Material Requirements Planning system it is possible for companies to achieve high levels of on-time delivery for a large number of orders. This feature ensures the availability of components, materials, and products by automatically creating job orders for the production section.

### Sistrade MRP stages:

- Order selection
- Required materials analysis
- Calculation of purchase, production and reserves needs
- Recalculation of dates and their linking to purchase and manufacturing deadlines
- Material requisition in 3D load chart

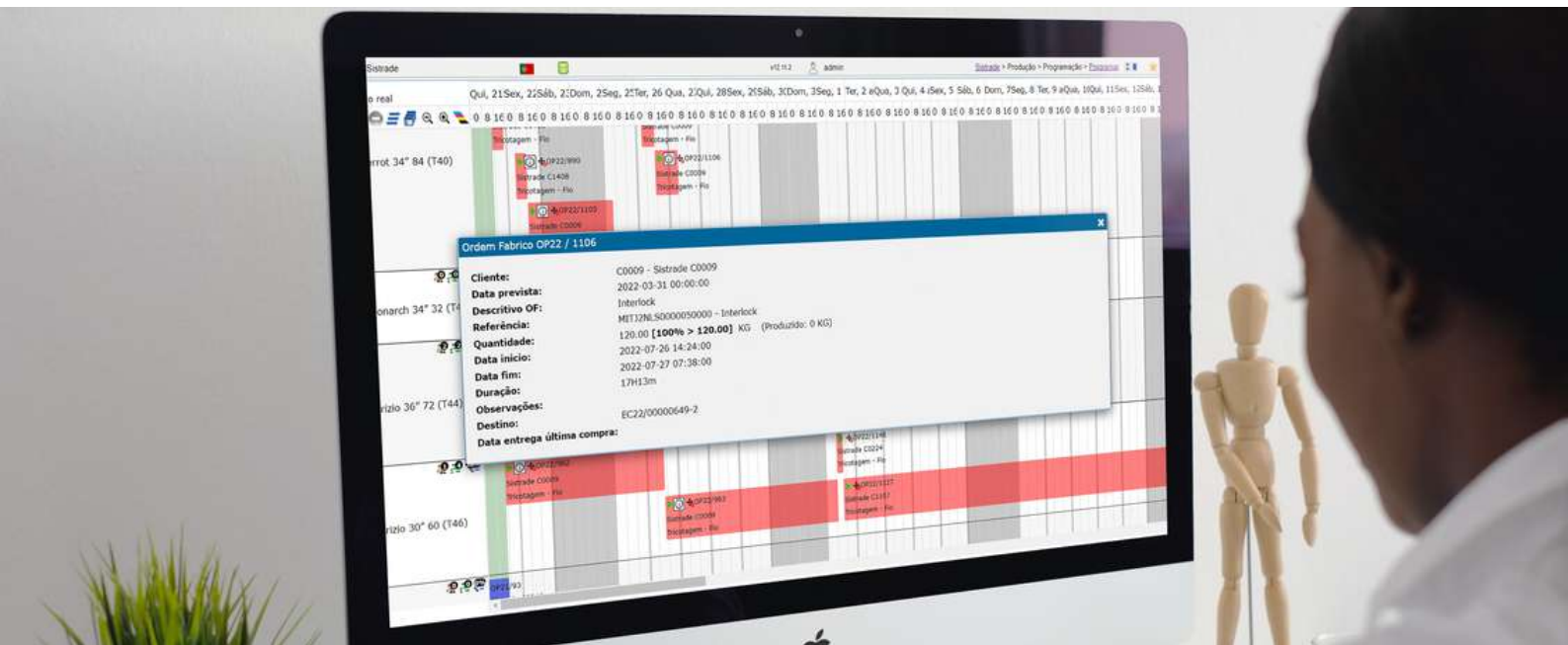


Materials requisition



3D load chart

# Scheduling

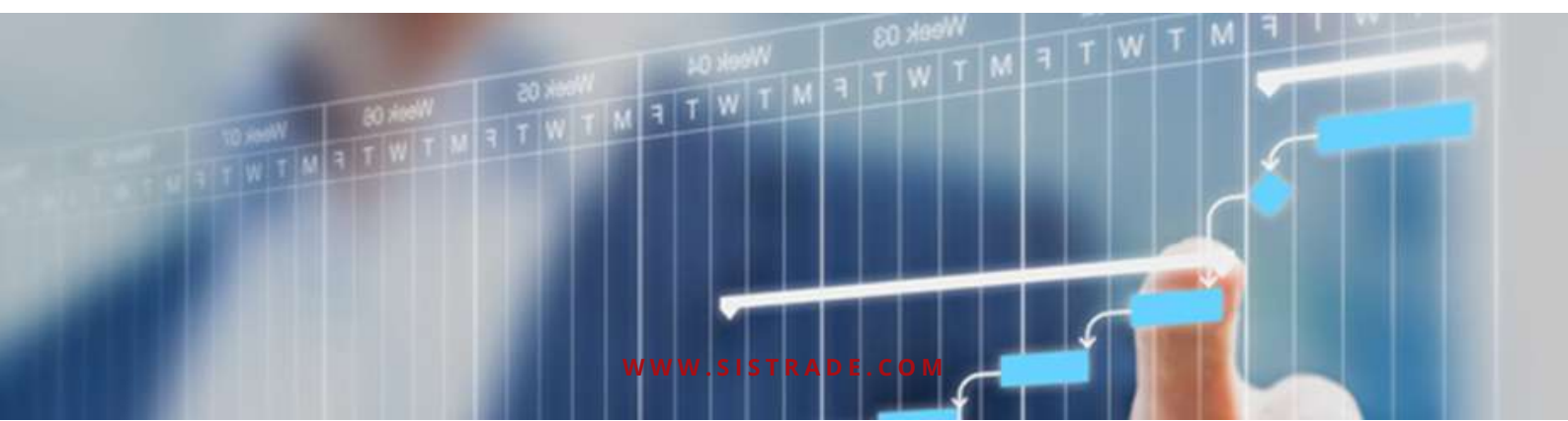


Machine detailed planning is carried out in an automatic, agile and simple model, with the definition of rules. The software enables the allocation of raw material batches to the order for traceability control.

The graphical representation of planning helps the user to readjust the planning made by the system for a better response. As a dynamic graphic, the production time will be adjusted according to the information provided by the machine. A pop-up window displays the status, with the **order information, production and remaining time, material and estimated completion date.**

## To improve interaction with planning, the system allows:

- Order division
- Fixing production starting dates
- Changing machines for orders





# Sistrade Software for Textile Industry

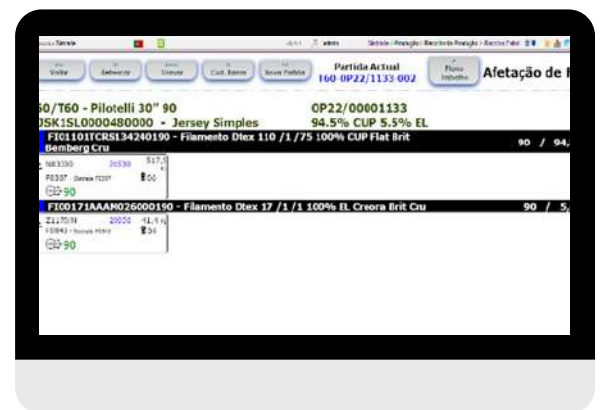
## Production Data Collection



The production data collection is the solution designed for the shop floor, to incorporate the production data in the ERP.

### Parameters the system collects:

- Release of job orders (start/end)
- Allocation of raw material
- Operations confirmation
- Events confirmation
- Production records
- Consumptions
- Produced and missing quantities
- Data history
- Temperature
- Speed
- Downtimes



## Dashboards

All modules have the most relevant indicators to be presented for each area, such as the total of invoicing in sales, the occupation of the stocks in the warehouses, approved production orders in production, the total of debit and credit in accounting, the number of active employees in human resources and many others.

With this important tool users can analyze important information of the company filtered by:

- Week/month/quarter/semester/year/financial year and other periods
- Client/vendor/country

### Estimates:

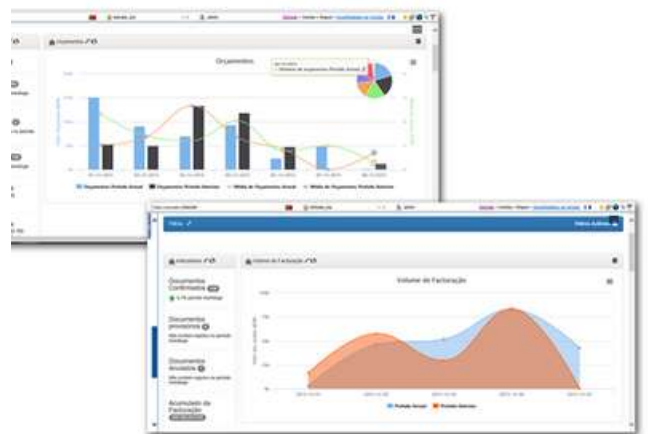
- Estimates requested, assigned, approved and granted
- Estimates response time
- Productions (new vs repeat) and by type

### Orders:

- Orders volume and approved for production
- Pending credit approval
- Return on sales
- Order book
- Orders by country

### Invoicing:

- Sales volume
- Confirmed, provisional and cancelled documents
- Accumulated billing
- Sales ranking (by client and by product)
- Sales by vendor and country



## Key information available for:

- CRM
- Sales
- Procurement
- Stocks
- Production
- Equipment Maintenance
- Quality Control
- Treasury
- Accounting
- Human Resources
- Fixed Assets

# Sistrade Software - MIS | ERP

## Solutions

### Commercial Management & Estimating

Estimating  
Customer Order  
Shipment  
Invoicing  
CRM

### Stocks & Purchases Management

MRP  
Purchases  
Stocks management  
Suppliers management  
WMS



### Production Management

Scheduling  
Data Collection  
Industrial Costing  
Job Order Management

### Administrative & Financial

Accounting  
Treasury  
Fixed Assets  
Human Resources

## Other features

Equipment Maintenance  
Quality Control  
Ecomanager  
Energy Management  
RDI Management

Business Intelligence  
Dynamic Dashboards  
Report Generator  
Web2Print  
Balanced Scorecard



## Sistrade Users

Sistrade® Software is used by more than 5000 users, in more than 30 countries and spread over 4 continents.

Meet some of our Textile Industry clients:



### Cotesi - Companhia de Têxteis Sintéticos, S.A.

Portugal

Cotesi is one of the European pioneers in the production of yarns, ropes, nets and cables from both natural and synthetic raw materials. Today, Cotesi is the world's best producer of agricultural yarn.



### CorDEX Companhia Industrial Textil S.A.

Portugal

The history of CORDEX goes back 50 years, from the production of baling yarns to agricultural yarns in sisal and synthetics, to today's agricultural netting and film.



### Idepa

Portugal

Founded in 1965, IDEPA has gathered family experience over three generations and is specialized in the manufacturing of woven and non-woven labels.



### Sidónios

Portugal

Sidónios Malhas is a national reference company when it comes to knitwear manufactured in circular looms.





powered by **Sistrade**

## Porto - Headquarters

Travessa da Prelada, 511  
4250-380 Porto - Portugal  
+351 226 153 600  
inov@sistrade.com

## Madrid

Parque Empresarial La Moraleja  
Avenida de Europa, 19 3º A  
28042 Madrid - Spain  
madrid@sistrade.com

## Paris

39 rue du Mûrier (BP 125)  
37540 Saint-Cyr-sur-Loire - France  
paris@sistrade.com

## Istanbul

Dikilitaş Hakkı Yeten Cad. Sel. Plaza, 10/C  
Kat:6 Fulya 34349 Besiktas - Turkey  
istanbul@sistrade.com

## Ljubljana

Rozna dolina, Cesta II/29  
1000 Ljubljana - Slovenia  
ljubljana@sistrade.com

## Warsaw

Al. Niepodległości, 69 - 7º  
02-626 Warsaw - Poland  
warsaw@sistrade.com

