

## Enterprise Management System for Packaging Industries

### MAIN FEATURES

- :: Estimating for packaging, according to the standard of ECMA and FEFCO, with automatic print imposition;
- :: Automatic calculation of cutting and search assisted in the database of cutting according to dimensions of work;
- :: Counting in real time the consumed quantity of substrate and number of coils produced (e.g. in kilograms and meters);
- :: Management job datasheets by customer, with technical design, method of packaging and product photography to produce;
- :: Estimate comparison at any time versus produced in terms of time and production costs (direct and indirect);
- :: Graphic analysis of productive and unproductive time per machine / section.

### JOB EXAMPLES

- :: Cardboard Box
- :: Corrugated Cardboard



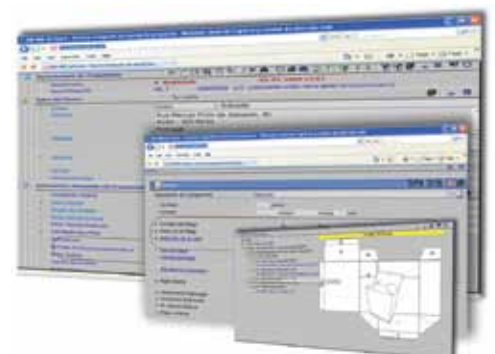
Sistrade® Print is an ERP developed by SISTRADE based on the most recent IT tools, offering access to all features through the Internet, simplifying the company management from anywhere. We are talking about a *web-oriented* system with a 100% Web interface and a database in SQL Server.

Sistrade® Print specializes in the packaging area, cardboard boxes, corrugated cardboard, among other common jobs in this sector. This project comes from the need to implement Sistrade® Print in printing and packaging industries which work in the packaging area. It is a completely customized application, becoming more functional in all features.

Currently, the system has the ability to estimates any types of boxes according to the standard of ECMA (European Carton Makers Association) and FEFCO (European Federation of Corrugated Board Manufacturers).

### ESTIMATES RECORD

- :: A heading displaying all customer's data, namely the customer's name, address, salesman, payment conditions, expedition data, quantity, estimate description, among other things;
- :: Technical data about the job to perform, e.g. format type, final format, information about whether the paper belongs to the customer or not, grammage (gr/m<sup>2</sup>), type of paper, printing forms, materials support, grammage level, work type, printing type, etc.;
- :: Input of measures and box margins;
- :: Internal comments, from customers and from other specifications;
- :: Workflow, obeying a pre-defined approval sequence.



## DEFINITION OF THE PRINTING FEATURES

- :: Definition of the printing machine with all its technical features;
- :: Change the features that the system suggests;
- :: Selection of colours which will be used;
- :: Selection of varnish type;
- :: Change the paper the system suggests;
- :: Possibility of choosing a second printing machine;
- :: Selection of box type structure by 4 levels: standard, class, level 1 and level 2;
- :: Simulation in 2D and 3D.

## OTHERS QUANTITIES

- :: Simulation of other quantities including the margins (salesman, agent, company, etc.);
- :: Calculation of cost and sale price for each quantity;
- :: Possibility to simulate several quantities at the same time in a few seconds.

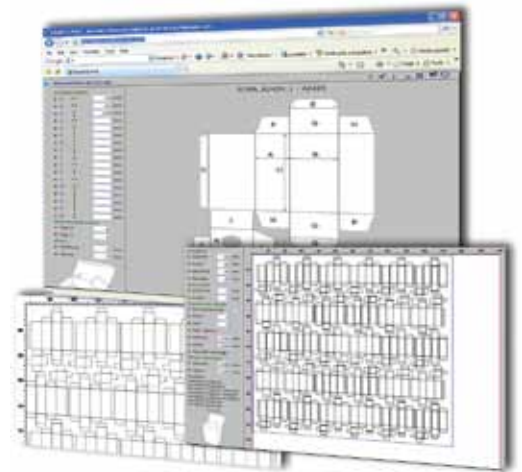
## SENDING TO THE CUSTOMER

- :: Printing an estimate letter (offer);
- :: Emailing it to the customer;
- :: Exporting it to *word*, *excel* or *PDF*.

## ESTIMATE COSTS CALCULATION

- :: General components and setup costs;
- :: Printing costs, evaluating the imposition measures, tracks, dyeing area, timings;
- :: Costs with varnish, along with its setup times and printing types;
- :: Costs with resources/machines, setup times, printing, gluing areas and its requirements;
- :: Operations, including subcontract stages;
- :: Global cost, identifying Cost/Profit;
- :: Agent and salesman commissions;
- :: Application of financial margins, with margin index, commissions, administrative costs, fixed costs, rappel, etc.;
- :: Financial indicators.

The system automatically calculates the imposition, choosing the most adequate machine and paper.



Simulating other quantities allows the estimator to foresee the costs and benefits it may bring, in case the customer will require several quantities. All this is possible thanks to the previously performed customization of materials and resources costs.

| Item      | Unit | Quantity | Unit Price | Total Price |
|-----------|------|----------|------------|-------------|
| Material  | m²   | 100      | 0.10       | 10.00       |
| Labour    | h    | 10       | 1.00       | 10.00       |
| Machine   | h    | 10       | 0.50       | 5.00        |
| Varnish   | g    | 100      | 0.05       | 5.00        |
| Glue      | g    | 100      | 0.05       | 5.00        |
| Transport | km   | 10       | 0.10       | 1.00        |
| Other     | h    | 10       | 0.50       | 5.00        |
| Total     |      |          |            | 51.00       |



### Modules of ERP | MIS Sistrade® Print system:

- :: Commercial Management & Estimating
- :: CRM
- :: Stocks & Purchases Management
- :: Production Management
- :: Scheduling - Production Planning
- :: SCADA - Supervision & Data Acquisition
- :: Balanced ScoreCards
- :: E-business
- :: Mobile Business
- :: Quality Control
- :: Equipment Maintenance
- :: Electronic Invoicing
- :: Banks Management
- :: JDF - Job Definition Format

### Sistrade® Solutions for industry of:

- :: Commercial Print
- :: Flexible Packaging
- :: Boxes
- :: Labels
- :: Digital
- :: Envelopes
- :: Forms
- :: Editorial/Publisher
- :: Metalworking
- :: Textile
- :: Food



SISTRADe - Software Consulting, S.A. | [inov@sistrade.com](mailto:inov@sistrade.com) | NIPC: 504785621 | [www.sistrade.com](http://www.sistrade.com)  
**PORTO:** R. Manuel Pinto de Azevedo, 64B, 4100-320 Porto, Portugal | T. +351 226 153 600  
**LISBON:** Av. António Augusto de Aguiar nº 148, 4ºC, 1050-021 Lisbon, Portugal | T. +351 213 805 082  
**MADRID:** Ribera del Loira, 46 - Bloque 2, Planta 4, 28042 Madrid, Spain | T.+34 915 030 083  
**WARSAW:** Al. Niepodleglosci 69, 1st floor, 02-626, Warsaw, Poland | T. +48 606 744 996  
**LJUBLJANA:** Šmartinska 152, Hala 9, 1000 Ljubljana, Slovenia | T. +386 40 646 753  
**ISTANBUL:** Büyükdere Caddesi, Levent No 193 Binasi K.2, 34394, Istanbul, Turkey | T. +90 212 371 47 29  
**FRANKFURT:** Platz der Einheit 1, 60327 Frankfurt am Main, Germany | T. +49 (0)69 975 034 19  
**ABU DHABI:** Al Hilal Bank Building - Falah Street, PO Box 129 354, Abu Dhabi, UAE | T. +971 (0) 249 30297  
**PARIS:** 57, rue d' Amsterdam, Paris, 75008, France | T. +33 (0) 181 504 506  
**MILAN:** Viale Abruzzi, 13/A, 20131 Milan, Italy | T. +39 0 2954 205 376  
**MEXICO CITY:** Av. Insurgentes Sur #1898, piso 12 Colonia Florida C.P. 01020 Distrito Federal, Mexico City  
T.+52 (55) 9171 1156