



# Sistrade<sup>®</sup> Print Equipment Maintenance

## Integrated with ERP | MIS

### MAIN FEATURES

- :: Equipment Maintenance
- :: Equipment Tree
- :: Maintenance Plans Definition
- :: Maintenance Plans
- :: Preventive Maintenance
- :: Malfunctions and Reactive Maintenance
- :: Integrating with Production Plan

In today's industries, it is necessary to pay a special attention to equipment maintenance, since investments in resources are very high and production stops can result great money losses!

Using Sistrade<sup>®</sup> Print, the enterprise has an integrated maintenance control system, machines and parts, from maintenance plan definition, recording preventive and reactive maintenance to maintenance orders issuing. All this information in maintenance orders can be cross-related with production scheduling system, preventing time reservation for maintenance orders to be fulfilled.

### EQUIPMENT TREE

With growing equipment complexity, maintenance is no longer planned for all its parts but for each "sub-equipment" necessities. Answering to this requisite, SISTRADE<sup>®</sup> developed a system supported on Equipment Tree. With this feature, one can easily obtain all resource equipments and define maintenance plan for each one of those, thus, for the resource itself.

### EQUIPMENT MAINTENANCE MANAGEMENT

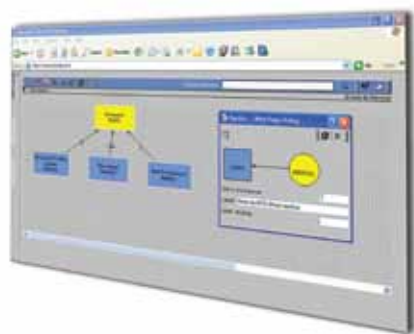
Through Sistrade<sup>®</sup> Print, maintenance orders can be created resulting from any event. Generally, maintenance can be defined as preventive or reactive. Preventive is the one that is can be predicted or be known to happen. Reactive maintenance is a result of not known or not expected events (sometimes, causing resources to stop). After being reported to maintenance department, the manager prepares the maintenance plan where he/she can associate each one of them, times, materials needs, etc. This information can be cross-related with production plan preventing that time is allocated to maintenance.

### PREVENTIVE MAINTENANCE

To make maintenance easier, plans can be defined. These plans, with variable timescale (time, km, liters, pounds, etc.), can generate alerts which can be sent, for instance, to an e-mail box.

### REACTIVE MAINTENANCE

All malfunctions and non-conformities, detected while machines are running, are inserted in the system, generating a reactive maintenance request. Attached to these requests, all information about that event is gathered, making problems resolution easier.



## STOCKS AND SPARES MANAGEMENT

Stocks and Spares management module allows parts and components tree generation for each resource, assigns materials and spares to a maintenance order in particular and, special feature, manages warehouse spare movements.

## MAINTENANCE DATA CAPTURE

Using Production Data Capture, system can monitorize maintenance. To do so, the employee just has to read a bar codes in maintenance order. This procedure can be used to capture information about actions and materials and spares, once each one of this elements is defined in the system with a bar code. Examples are "Begin", "Lunch-Break", "Part XPTO", "Oil Type XYZ", "Testing" and "Done". At the end, all materials and times are recorded in the system and associated with a certain maintenance order.

## MAINTENANCE COSTS

Maintenance Cost Analysis gives information about all associated incumencies. Crossing this information with production data, optimized maintenance plans can be done. This will reduce maintenance/production costs once in-time maintenance reduces wastes and production mistakes.

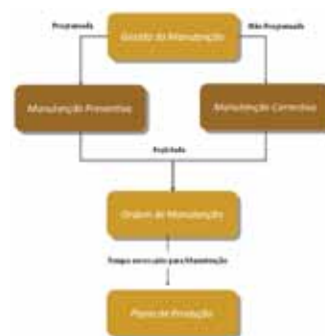
## MAINTENANCE ORDERS

Both preventive and reactive maintenance, while being processed and validated, generate a maintenance order. With Sistrade® Print, during maintenance order generating, one can define all information associated with maintenance fulfillment. It defines machine data, needed parts and materials, maintenance manuals, implied HR, etc.



## INTEGRATING WITH SCHEDULING

To the industry branches, where maintenance is more intense, SISTRADe developed a GANNT chart which makes maintenance plan easier. Production chart can be cross-related with maintenance one, generating an overview with valuable information for those who manage and decide.



### Modules of ERP | MIS Sistrade® Print system:

- :: Commercial Management & Estimating
- :: CRM
- :: Stocks & Purchases Management
- :: Production Management
- :: Scheduling - Production Planning
- :: SCADA - Supervision & Data Acquisition
- :: Balanced ScoreCards
- :: E-business
- :: Mobile Business
- :: Quality Control
- :: Equipment Maintenance
- :: Electronic Invoicing
- :: Banks Management
- :: JDF - Job Definition Format

### Sistrade® Solutions for industry of:

- :: Commercial Print
- :: Flexible Packaging
- :: Boxes
- :: Labels
- :: Digital
- :: Envelopes
- :: Forms
- :: Editorial/Publisher
- :: Metalworking
- :: Textile
- :: Food



**SisTrade®**  
Software Consulting, S.A.



SISTRADe - Software Consulting, S.A. | inov@sistrade.com | NIPC: 504785621 | www.sistrade.com  
PORTO: R. Manuel Pinto de Azevedo, 64B, 4100-320 Porto, Portugal | T. +351 226 153 600  
LISBON: Av. António Augusto de Aguiar nº 148, 4ºC, 1050-021 Lisbon, Portugal | T. +351 213 805 082  
MADRID: Ribera del Loira, 46 - Bloque 2, Planta 4, 28042 Madrid, Spain | T.+34 915 030 083  
WARSAW: Al. Niepodległości 69, 1st floor, 02-626, Warsaw, Poland | T. +48 606 744 996  
LJUBLJANA: Šmartinska 152, Hala 9, 1000 Ljubljana, Slovenia | T. +386 40 646 753  
ISTANBUL: Büyükdere Caddesi, Levent No 193 Binasi K.2, 34394, Istanbul, Turkey | T. +90 212 371 47 29  
FRANKFURT: Platz der Einheit 1, 60327 Frankfurt am Main, Germany | T. +49 (0)69 975 034 19  
ABU DHABI: Al Hilal Bank Building - Falah Street, PO Box 129 354, Abu Dhabi, UAE | T. +971 (0) 249 30297  
PARIS: 57, rue d' Amsterdam, Paris, 75008, France | T. +33 (0) 181 504 506  
MILAN: Viale Abruzzi, 13/A, 20131 Milan, Italy | T. +39 0 2954 205 376  
MEXICO CITY: Av. Insurgentes Sur #1898, piso 12 Colonia Florida C.P. 01020 Distrito Federal, Mexico City  
T.+52 (55) 9171 1156